

# Selecting Summer Care for School-Age Children: A Quality Checklist



WHEN IT'S TIME TO SELECT SUMMER CARE FOR SCHOOL-AGE CHILDREN, there are many factors to consider. Use this checklist of questions as a guide for ensuring that you and your child have a safe and productive summer! Take time to learn about each summer care program you are considering. Many options exist, including school-based programs, parks & recreation, churches, youth service agencies, family child care homes, specialty camps, child care centers, etc. Make sure your decision is a **QUALITY** decision for you and your child.

## What to look for when selecting a summer camp or program:

**What are the program's health, safety and nutrition policies and procedures?**

Ask about the sign-in/sign-out policies, medication policy, discipline policy, lifeguard certification/water safety policy, field trip & transportation policies, handling of sick children, and missing children policy. Ask if the program follows any established nutritional guidelines. Ask if their policies are in writing and if their facility meets local and state legal requirements.

**Is staff screened?**

Have the owner/operator/director/employees/volunteers been fingerprinted as required by law? Has the camp conducted a check of local law enforcement records, national and statewide criminal history check through the Federal Bureau of Investigation and Florida Department of Law Enforcement for all of the staff and volunteers? What additional screening methods does the program use?

**What are the staff/child ratios and group sizes of the program?**

Florida's maximum staff-to-child ratio for school-age children is 1-to-25. National quality standards recommend between 1-to-8 and 1-to-15 for children age 5-teens, and group sizes no larger than 30.

**Is staff well-trained?**

Ask about staff experience and education in early childhood/school-age care, recreation, serving children with special needs, CPR/First Aid/Lifeguarding and if appropriately licensed when transporting children.

**Is the program licensed or accredited?**

Summer programs are not required to be licensed or accredited. Licensure and accreditation ensure that basic health and safety standards are met. Accreditation often requires additional quality standards.

**Are parents welcome to visit at all times? Are family activities offered?**

Programs should be accessible and welcoming to parents and families at all times.

**Is there a daily lesson plan?**

Ask to review a typical lesson plan. Quality programs provide more than continuous free play. Plans should be consistent with the philosophy of the program and should include indoor, outdoor, quiet, active, staff-planned, child-initiated and free choice activities.

**Is the facility adequate for the number of children enrolled?**

Is there enough room for all program activities? Outdoor programs should include indoor or sheltered areas for resting, respite from the sun and for bad weather days.

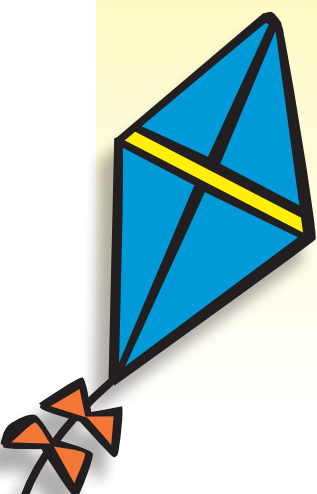
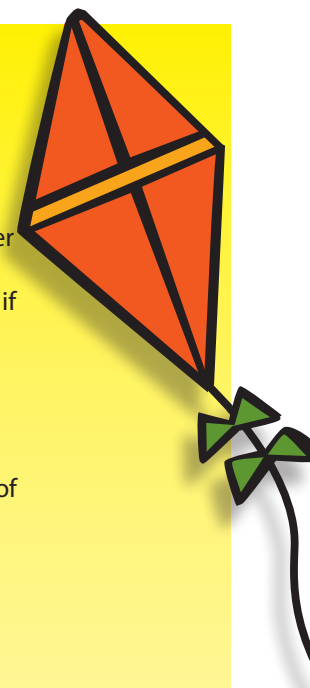
**What are the hours of operation, fees and payment procedures?**

Do drop off and pick up hours and procedures ensure that your child is receiving proper adult supervision? Are there fees for enrollment, special activities, late pickups or late payments?

For information on summer care options in your area, contact Florida's Child Care Resource and Referral Network at 1-866-357-3239.



2807 Remington Green Circle • Tallahassee, FL 32308  
(850) 681-7002 • [www.thechildrensforum.com](http://www.thechildrensforum.com)



# Quality Child Care Connections

## Florida's Child Care Resource and Referral Network

The Office of Early Learning serves as the headquarters for the Early Learning Coalitions and CCR&R agencies across the state. Local CCR&R agencies provide information on how to choose a quality child care provider and can refer families to child care options available in your area, as well as offer information about community resources. Trained staff can also provide information on how to access financial assistance for early education and care and how to enroll a 4-year-old in a Voluntary Prekindergarten Program.

The Office of Early Learning also serves as a clearinghouse of information, data, research, and training on all aspects of the child care industry.

You can obtain your local Child Care Resource and Referral contact information by contacting The Office of Early Learning:

**1-866-357-3239 (toll-free) or 850-717-8550**  
**[www.floridaearlylearning.com](http://www.floridaearlylearning.com)**

## Florida Department of Children and Families Child Care Services Program Office

The Department of Children and Families is responsible for the licensure of child care facilities, family day care homes, large family child care homes, mildly-ill facilities and registration of family day care homes in 62 of the 67 counties in Florida. Child care licensing files are public records and parents are encouraged to contact their local licensing authority to determine if a program is licensed and to review child care licensure files to assist families in making informed decisions about child care programs. Local contacts may be found on the Department's website or by calling the program office.

**1-850-488-4900**  
**[www.myflorida.com/childcare](http://www.myflorida.com/childcare)**



Permission is granted to reprint this document with acknowledgements.

## Child Care Aware

Child Care Aware is a non-profit initiative whose mission is to ensure that every parent has access to good information about finding quality child care and resources in their community, through national consumer marketing and by raising visibility for local child care resource and referral agencies.

**1-800-424-2246**  
**[www.childcareaware.org](http://www.childcareaware.org)**

## Florida Afterschool Network (FAN)

The Florida Afterschool Network provides advocacy for the development, enhancement, and sustainability of innovative, high-quality afterschool programs throughout the state of Florida.

**1-850-222-4025**  
**[www.myfan.org](http://www.myfan.org)**

## Florida Abuse Hotline

The Florida Abuse Hotline is a 24-hour hotline that handles reports of abuse, neglect and exploitation of children and vulnerable adults (the elderly or adults with disabilities).

**1-800-96-ABUSE (1-800-962-2873)**  
**[www.myflfamilies.com/service-programs/abuse-hotline](http://www.myflfamilies.com/service-programs/abuse-hotline)**

## National Resource for Health & Safety

The National Resource Center's primary mission is to promote health and safety in out-of-home child care settings throughout the nation. Licensing regulations from all 50 states are available on this website.

**1-800-598-5437**  
**[www.nrckids.org](http://www.nrckids.org)**

