

Florida Behavioral Health Care Data Repository Implementation Plan – report Submitted 12/1/25 – contributors

Dr. Tim Brown

Assistant Vice President for Florida State University
Information Technology Services, Northwest Regional Data
Center and Florida Virtual Campus

Dr. Rick Burnette

Senior Vice Provost and Chief Strategy Officer at Florida State
University

Melissa Carlson

Project Manager in the College of Behavioral and Community
Sciences at University of South Florida

Dr. Heather Flynn

Professor and Chair in the Department of Behavioral
Sciences and Social Medicine at Florida State University

Dr. Kathleen Moore

Research Professor and Executive Director of the Louis de la
Parte Florida Mental Health Institute in the College of
Behavioral and Community Sciences at University of South
Florida

Marcelo Pessotto

Senior IT Project Manager of the Northwest Regional Data
Center at Florida State University

Jorge Vidal

Director of Data and Analytics of the Northwest Regional Data
Center at Florida State University

Elements Covered in the Report (SB 168)

Project Plan

Data Integration and Technology

Implementation Timeline

Budget for subsequent phases/ years

Governance Plan and Structure

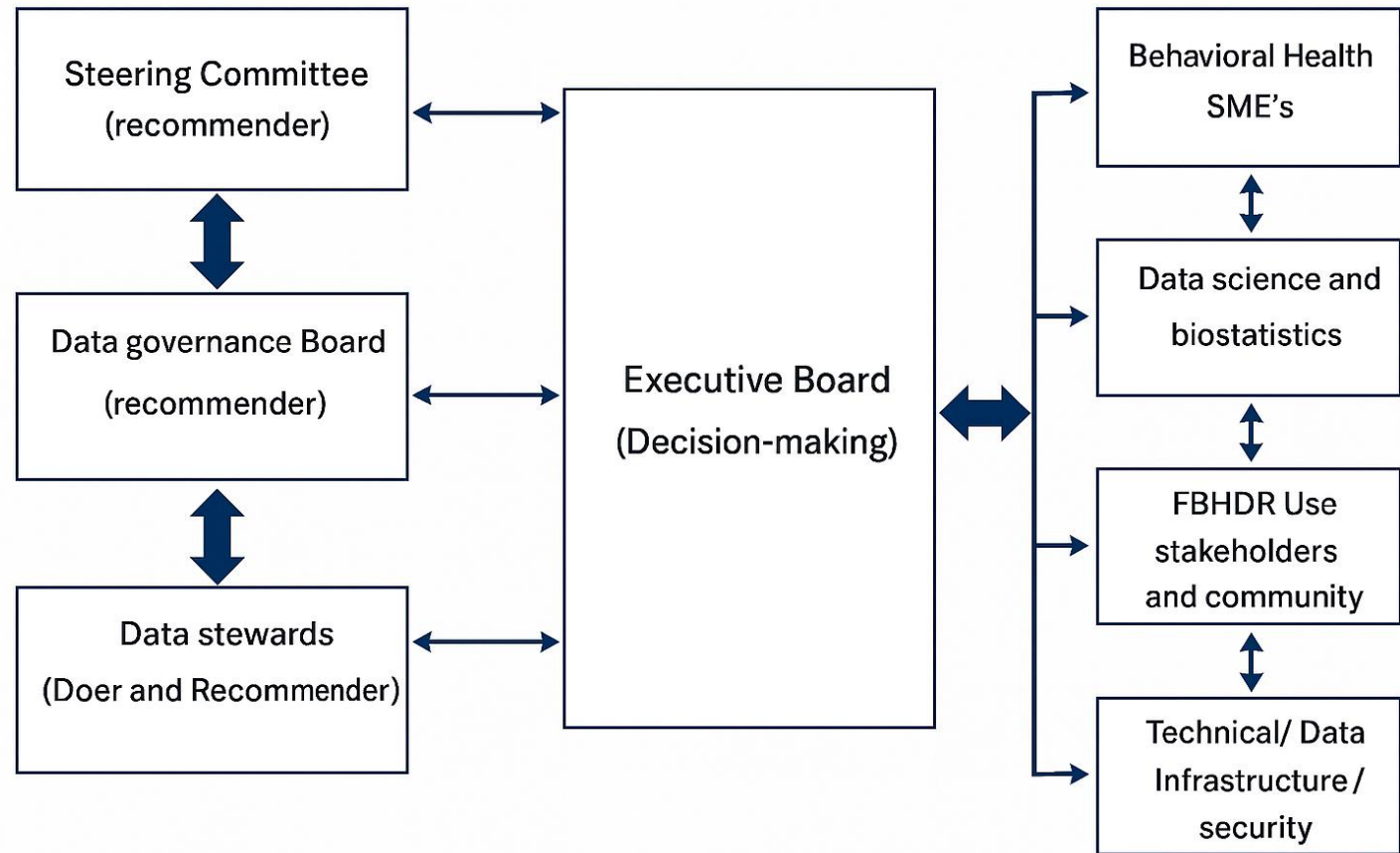
Data integration and harmonization

Initial data uses

Data security

Reporting plan and structure

Governance
Highlights: Based on
iterative feedback
from these Sub-
committee meetings
and national
standards



Phase 1 Data Use Highlights

Domain 1: Descriptions of Behavioral Health (BH) Clients, Services, and Outcomes

Questions include:

- a) How many people in Florida have behavioral health conditions and what are their characteristics (age, region, etc.)?**
- b) What services are accessed by people with BH conditions and are these the right services?**
- c) What are the clinical outcomes of people who receive behavioral health services?**

Domain #2: Prediction of client outcomes based on service use profiles.

Questions include:

- a) What factors are most important in whether behavioral health outcomes improve in Florida?**
- b) When all important factors are considered together (demographic and clinical factors, service type & duration, co-morbidities, insurance, geographic region), which factors or combination of factors predict client behavioral health outcomes?**

Domain #3: Costs based on client and service characteristics

Questions include:

- a) How much do behavioral health services cost based on integrated BH data sources?**
- b) What is the cost per client of various types and combination of services (e.g. outpatient, inpatient, medications, case management)?**
- c) Are medical costs lower for clients with BH conditions that receive BH treatment versus those with BH conditions who do not receive treatment?**
- d) What are the average costs per client based on diagnoses, types of services and combinations of services, provider type, and geographic region?**