



# Florida's Youth Survey: Spring 2016

## Listening to Every Youth...Every Year...

### Who completed the survey?

1102 Youth

completed the "My Services" survey

Youth ages 13-17 and living in a licensed foster care placement are eligible to take the survey.

### How is the survey administered?

Taking the survey is voluntary; however, youth are encouraged to complete the "My Services" survey.

"My Services" is an on-line survey designed to be completed in modules and responses are saved to better accommodate a youth's schedule.

### When is the survey

The Spring survey period for the 13-17 year olds is usually March 1st—April 30th. This year the survey was open from April 15th—May 31st .

### Is the survey confidential

Survey answers are private. Each youth has a unique log-in password issued by the Department. Cby25® Initiative can access the youth's name, password, date of birth and survey responses. We can not access other identifier information. We do not know the youth's gender, address or type of placement.

Only the Department has access to all of the youth's identifier and survey response information.

### Survey Data Reports

The Statewide survey data report is published on the DCF website. The report is also sent to youth advocacy groups, ILSAC, the CBC Lead Agencies and other stakeholders.

The CBC Lead Agencies can access the youth survey response data by age group through a data portal. The name of the youth and their password is not stored in the CBC data portal..

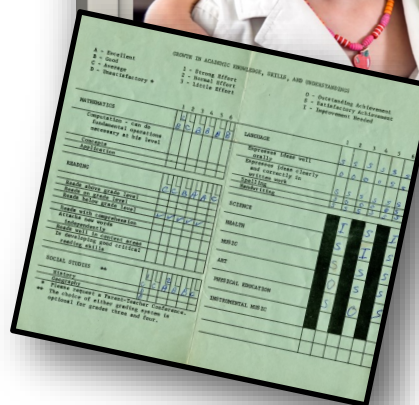


1.

I have a recent photograph of myself taken in the last 3 months.						
	13	14	15	16	17	TOTAL
<b>Yes</b>	132	174	192	182	200	<b>880</b>
<b>No</b>	45	39	50	53	35	<b>222</b>
<b>TOTAL</b>	177	213	242	235	235	<b>1102</b>
<b>Percent Yes</b>	75%	82%	79%	77%	85%	<b>80%</b>

I have a collection of pictures, records of special events, and important papers from my time in foster care.						
	13	14	15	16	17	TOTAL
<b>Yes</b>	97	132	128	123	155	<b>635</b>
<b>No</b>	80	81	114	112	80	<b>467</b>
<b>TOTAL</b>	177	213	242	235	235	<b>1102</b>
<b>Percent Yes</b>	55%	62%	53%	52%	66%	<b>58%</b>

I have a recent photograph of my siblings taken in the last 3 months.						
	13	14	15	16	17	TOTAL
<b>Yes</b>	89	109	126	109	122	<b>555</b>
<b>No</b>	85	92	106	118	94	<b>495</b>
<b>I do not have siblings</b>	3	12	10	8	19	<b>52</b>
<b>TOTAL</b>	177	213	242	235	235	<b>1102</b>
<b>Percent Yes</b> <small>[Does not include responses of "I do not have siblings"]</small>	51%	54%	54%	48%	56%	<b>53%</b>



I have a photograph of my relatives taken in the past year.						
	13	14	15	16	17	TOTAL
<b>Yes</b>	99	116	129	127	141	<b>612</b>
<b>No</b>	78	97	113	108	94	<b>490</b>
<b>TOTAL</b>	177	213	242	235	235	<b>1102</b>
<b>Percent Yes</b>	56%	54%	53%	54%	60%	<b>56%</b>

<b>I have access to an original or certified copy of my Birth Certificate.</b>						
	<b>13</b>	<b>14</b>	<b>15</b>	<b>16</b>	<b>17</b>	<b>TOTAL</b>
<b>Yes</b>	88	116	125	143	186	<b>658</b>
<b>No</b>	89	97	117	92	49	<b>444</b>
<b>TOTAL</b>	177	213	242	235	235	<b>1102</b>
<b>Percent Yes</b>	50%	54%	52%	61%	79%	<b>58%</b>

<b>I have a State of Florida Identification Card.</b>						
	<b>13</b>	<b>14</b>	<b>15</b>	<b>16</b>	<b>17</b>	<b>TOTAL</b>
<b>Yes</b>	30	39	61	97	166	<b>393</b>
<b>No</b>	147	174	181	138	69	<b>709</b>
<b>TOTAL</b>	177	213	242	235	235	<b>1102</b>
<b>Percent Yes</b>	17%	18%	25%	41%	71%	<b>36%</b>

<b>I have my Social Security Card.</b>						
	<b>13</b>	<b>14</b>	<b>15</b>	<b>16</b>	<b>17</b>	<b>TOTAL</b>
<b>Yes</b>	66	90	88	98	151	<b>493</b>
<b>No</b>	111	123	154	137	84	<b>609</b>
<b>TOTAL</b>	177	213	242	235	235	<b>1102</b>
<b>Percent Yes</b>	37%	42%	36%	42%	64%	<b>45%</b>

<b>I know who to ask to get my dependency records. (Access to the Foster Care Case File)</b>						
	<b>13</b>	<b>14</b>	<b>15</b>	<b>16</b>	<b>17</b>	<b>TOTAL</b>
<b>Yes</b>	105	121	137	143	172	<b>678</b>
<b>No</b>	72	92	105	92	63	<b>424</b>
<b>TOTAL</b>	177	213	242	235	235	<b>1102</b>
<b>Percent Yes</b>	59%	57%	57%	61%	73%	<b>62%</b>

# 2.

## Engaged Participating in the Foster Care Legal Process

COURT REVIEWS,  
CASE PLANS & PERMANENCY

Of the 540 youth ages 15-17, who responded they had a Case Plan ...  
59% stated "Yes" - they helped develop their own case plan

Do you have a case plan?				
	15	16	17	TOTAL
<b>Yes</b>	179	154	181	<b>514</b>
<b>No</b>	56	69	47	<b>172</b>
<b>I have a case plan but I don't agree with it</b>	7	12	7	<b>26</b>
<b>TOTAL</b>	242	235	235	<b>712</b>
<b>Percent Yes</b> [Includes responses of: "I have a case plan but I don't agree with it"]	77%	71%	80%	<b>76%</b>

Do you attend your foster care court hearings?							
	13	14	15	16	17	TOTAL	%
<b>Yes</b>	57	90	116	110	133	<b>506</b>	<b>46%</b>
<b>Sometimes</b>	43	65	74	66	60	<b>308</b>	<b>28%</b>
<b>No, but I want to attend my foster care court hearings</b>	38	22	25	29	17	<b>131</b>	<b>12%</b>
<b>I do not want to attend my foster care court hearings</b>	39	36	27	30	25	<b>157</b>	<b>14%</b>
<b>TOTAL</b>	177	213	242	235	235	<b>1102</b>	

On September 29, 2014, Public Law 113-183, The Preventing Sex Trafficking and Strengthening Families Act; was signed into law amending Title IV-E of the Social Security Act.

A 9/25/16 "Informational Memo" from the Department, provided guidance on provisions in the law that seek to empower foster children to actively participate in the development of their own case plan and transition plan.

Specific to youth age 14 years of age and older in out-of-home care: "The case plan and any revision or addition to the plan shall be developed in consultation with the child. The child may choose up to two (2) members of the case planning team who are not the foster parent or case manager. The case manager shall document the reasons for excluding a team member chosen by the child when it is believed that the individual will not act in the best interests of the child."

In addition, Florida Statutes, require that the child's caregiver participate in developing the case plan for the child and his or her family and that the caregiver work with others in the implementation of the plan, including participation in team meetings and court hearings.

Do you understand what your permanency goal means?						
	13	14	15	16	17	TOTAL
<b>Yes</b>	131	173	197	189	196	<b>886</b>
<b>No</b>	46	40	45	46	39	<b>216</b>
<b>TOTAL</b>	177	213	242	235	235	<b>1102</b>
<b>Percent Yes</b>	74%	81%	81%	80%	83%	<b>80%</b>

I understand that I am entitled to have the courts review my permanency goal.						
	13	14	15	16	17	TOTAL
<b>Yes</b>	147	188	213	200	215	<b>963</b>
<b>No</b>	30	25	29	35	20	<b>139</b>
<b>TOTAL</b>	177	213	242	235	235	<b>1102</b>
<b>Percent Yes</b>	83%	88%	88%	85%	91%	<b>87%</b>

I want to be adopted.						
	13	14	15	16	17	TOTAL
<b>Yes</b>	57	70	79	61	29	<b>296</b>
<b>No</b>	79	112	115	134	179	<b>619</b>
<b>I am not sure</b>	41	31	48	40	27	<b>187</b>
<b>TOTAL</b>	177	213	242	235	235	<b>1102</b>
<b>Percent Yes</b> <small>[Does not include responses of: "I am not sure"]</small>	42%	38%	41%	31%	14%	<b>32%</b>

Do you have an Education & Career Path Plan? (This may be your EPEP)						
	13	14	15	16	17	TOTAL
Yes	38	49	50	43	79	259
No	139	164	192	192	156	843
TOTAL	177	213	242	235	235	1102
Percent Yes	21%	23%	21%	18%	34%	24%

I am currently receiving the education services outlined in my education plan - such as FCAT, SAT, ACT Preparation or Tutoring.							
	13	14	15	16	17	TOTAL	%
Yes	109	127	155	141	143	675	61%
No	34	48	52	64	58	256	23%
I do not need educational services	26	26	22	21	21	116	11%
I do not want educational services	8	12	13	9	13	55	5%
TOTAL	177	213	242	235	235	1102	

Who helps you with your homework?							
[Select all that apply] * % = # of responses / 1102 respondents							
	13	14	15	16	17	TOTAL	*%
Foster Parents	60	57	55	39	29	240	22%
Group Home Staff	45	52	54	56	47	254	23%
Mentor	11	13	18	18	18	78	7%
Tutor	55	60	58	63	59	295	27%
Teachers at School	58	78	81	69	72	358	32%
No one helps me with my homework	50	69	84	87	100	390	35%
TOTAL	279	329	350	332	325	1615	



PLAN YOUR FUTURE WITH  
MYCAREERSHINES

Explore careers. Make a plan for education. Prepare for work. Land your dream job. It all starts here.

Education and Career Planning for Life

MyCareerShines is a comprehensive education and career planning system that will help you succeed in the increasingly competitive global economy. You will learn about yourself, discover the many options and opportunities for your future, and gain access to the information and tools to achieve your goals.

[www.FloridaShines.org](http://www.FloridaShines.org)

Get Started Today!

During this school year, who attended parent/teacher conferences with you?							
[Select all that apply] * % = # of responses / 1102 respondents							
	13	14	15	16	17	TOTAL	*%
Biological Parent(s)/Family	15	9	12	8	5	49	4%
Family	18	20	17	16	12	83	8%
Foster Parents	50	57	57	55	46	265	24%
Group Home Staff	35	46	43	51	62	237	22%
Caseworker	34	38	51	56	71	250	23%
ILS Worker	2	5	1	7	9	24	2%
Guardian Ad Litem	17	15	29	26	21	108	10%
Mentor	1	3	3	4	7	18	2%
Other	5	9	14	11	13	52	5%
No one attended my parent/teacher conferences	51	68	92	77	83	371	34%
<b>TOTAL</b>	228	270	319	311	329	1457	

34% of the youth surveyed reported...  
“no one attended my parent/teacher conferences”

Do your foster parents or group home staff review your school grades and report card with you?						
	13	14	15	16	17	TOTAL
Yes	154	182	193	172	180	881
No	23	31	49	63	55	221
<b>TOTAL</b>	177	213	242	235	235	1102
<b>Percent Yes</b>	87%	85%	80%	73%	77%	80%

Does your caseworker review your school grades and report card with you?						
	13	14	15	16	17	TOTAL
Yes	122	151	160	136	158	727
No	55	62	82	99	77	375
<b>TOTAL</b>	177	213	242	235	235	1102
<b>Percent Yes</b>	69%	71%	66%	58%	67%	66%

I completed a Career Interest Survey in my school.				
	15	16	17	TOTAL
Yes	75	74	93	242
No	94	95	77	266
I do not know	73	66	65	204
TOTAL	242	235	235	712
Percent Yes [Does not include: "I do not know"]	44%	44%	55%	48%

We review my career interests as part of my Education & Career Plan/Case Plan.				
	15	16	17	TOTAL
Yes	97	92	149	338
No	75	78	49	202
Do not have an Education & Career Plan	70	65	37	172
TOTAL	242	235	235	712
Percent Yes	40%	39%	63%	47%

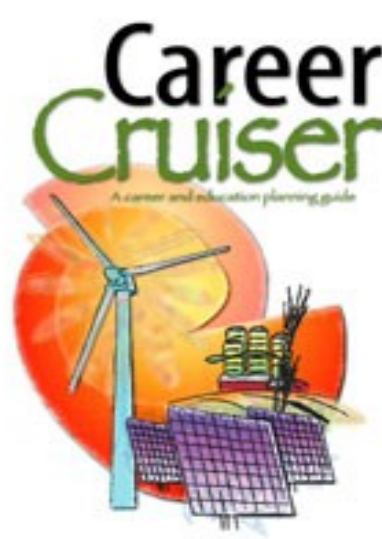
Parent Primer On Career Exploration

### What Are Career Clusters And Why Are They Important?

A career cluster consists of occupations that have been grouped according to common knowledge and skills. While students will want to learn more about individual occupations, it is also a good idea to identify clusters in which they see different levels of training and interests fall within one to three their Major Area of Interest (MAI) and technical program, fine a student as part of the personal career planning course. Start process and should update th

#### The 16 Career Clusters

- Agriculture, Food, & Natural Resources
- Architecture & Construction
- Arts, Audio/Video Technology & Communications
- Business, Management & Administration
- Education & Training (Fitness & Recreation)
- Financial Services (Banking & Finance)
- Government & Public Administration
- Health Science (Dental Hygiene, Therapeutic Services, Athletic Training, and Health Services)
- Hospitality & Tourism (Food & Beverage)
- Human Services (Social Services, Family Services, and Probation Officers)
- Information Technology (Computer Support, Network Support, and Information Systems)
- Law, Public Safety & Security
- Manufacturing (Civil Engineering, Mechanical, Welding, and Manufacturing)
- Marketing, Sales, & Service
- Science, Technology, Engineering & Mathematics (STEM)
- Transportation, Distribution & Logistics



**Career Cruiser**  
A career and education planning guide

\*Do not confuse MAI with a college major. Students do not select a college major as part of this process.

<http://www.fldoe.org/academics/college-career-planning/k-12-schools/career-resources.stml#cruiser>



I have been explained information on the Bright Futures Scholarship program including information on application deadlines and grade point requirements.						
*Asked only of youth in 9th grade or above, OR age 15 and older.						
	13	14	15	16	17	TOTAL
Yes	0	41	100	85	146	373
No	0	31	142	150	89	414
TOTAL	0	72	242	235	235	787
Percent Yes	0%	57%	41%	36%	62%	47%



I have information on the State of Florida tuition waiver.				
	15	16	17	TOTAL
Yes	68	83	143	294
No	174	152	92	418
TOTAL	242	235	235	712
Percent Yes	28%	35%	61%	41%

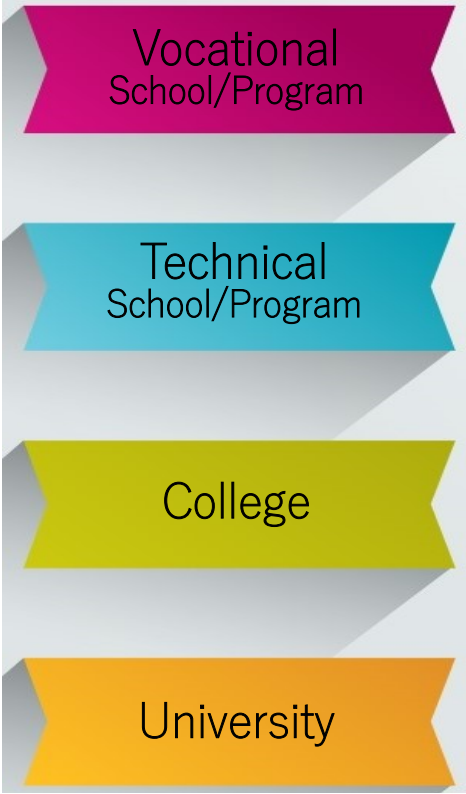
My caseworker has explained to me that I may be eligible for a State of Florida Tuition Waiver and other benefits if I leave foster care to legal guardianship if after the age of 16.				
	15	16	17	TOTAL
Yes	116	141	183	440
No	126	94	52	272
TOTAL	242	235	235	712
Percent Yes	48%	60%	78%	62%

My caseworker has explained to me that I may be eligible for a State of Florida Tuition Waiver and other benefits if I am adopted after the age of 16.				
	15	16	17	TOTAL
Yes	110	138	171	419
No	132	97	64	293
TOTAL	242	235	235	712
Percent Yes	45%	59%	73%	59%

I have been explained information on other grants, scholarships and waivers. Asked only of youth in 9th grade or above, OR age 15 and older.					
	14	15	16	17	TOTAL
Yes	45	116	103	162	427
No	27	126	132	73	360
TOTAL	72	242	235	235	787
Percent Yes	63%	48%	44%	69%	54%

I am currently taking classes that support the post-secondary education goal that I chose.				
	15	16	17	TOTAL
Yes	105	92	115	312
No	137	143	120	400
TOTAL	242	235	235	712
Percent Yes	43%	39%	49%	44%

Do you have someone that is assisting you with applying for a post-secondary education program? <small>[Asked of youth age 15 &amp; older and in 9th grade or above]</small>				
	15	16	17	TOTAL
Yes	35	61	113	209
No	106	110	68	284
I DO NOT want Help	38	27	23	88
TOTAL	179	198	204	581
Percent Yes	20%	31%	55%	36%



I have completed the following admissions/ vocational tests: <small>[Select all that apply] * % = # of responses / 581 respondents</small>					
	15	16	17	TOTAL	*%
PSAT	31	38	46	115	20%
SAT	18	33	55	106	18%
ACT	3	15	40	58	10%
College Placement Test	2	1	14	17	3%
ASVAB (Armed Services Vocational Aptitude)	1	4	17	22	4%

I have LEARNED about healthy personal relationships.						
	13	14	15	16	17	TOTAL
Yes	166	199	229	223	228	1045
No	11	14	13	12	7	57
<b>TOTAL</b>	177	213	242	235	235	1102
<b>Percent Yes</b>	94%	93%	95%	95%	97%	95%

I have LEARNED how to recognize and protect myself from domestic violence.						
	13	14	15	16	17	TOTAL
Yes	158	196	229	215	228	1026
No	19	17	13	20	7	76
<b>TOTAL</b>	177	213	242	235	235	1102
<b>Percent Yes</b>	89%	92%	95%	91%	97%	93%

I have LEARNED about the risks of using drugs, alcohol and tobacco.						
	13	14	15	16	17	TOTAL
Yes	171	207	237	226	229	1070
No	6	6	5	9	6	32
<b>TOTAL</b>	177	213	242	235	235	1102
<b>Percent Yes</b>	97%	97%	98%	96%	97%	97%

Learning about the risks of... drugs, alcohol, tobacco & domestic violence

In the past 12 months have you been arrested?						
	13	14	15	16	17	TOTAL
Yes	31	41	62	65	64	263
No	146	172	180	170	171	839
<b>TOTAL</b>	177	213	242	235	235	1102
<b>Percent Yes</b>	18%	19%	26%	28%	27%	24%

Are you currently taking any prescription medications?						
	13	14	15	16	17	TOTAL
<b>Yes</b>	86	101	131	106	107	<b>531</b>
<b>No</b>	91	112	111	129	128	<b>571</b>
<b>TOTAL</b>	177	213	242	235	235	<b>1102</b>
<b>Percent Yes</b>	49%	47%	54%	45%	46%	<b>48%</b>

Do you understand the possible side effects of your medication?						
	13	14	15	16	17	TOTAL
<b>Yes</b>	62	87	110	84	93	<b>436</b>
<b>No</b>	24	14	21	22	14	<b>95</b>
<b>TOTAL</b>	86	101	131	106	107	<b>531</b>
<b>Percent Yes</b>	72%	86%	84%	79%	87%	<b>82%</b>

Is there someone that you talk to about your medications?							
	13	14	15	16	17	TOTAL	%
<b>Yes, and I think they listen to my concerns</b>	74	79	114	88	99	<b>454</b>	<b>85%</b>
<b>I have someone to talk to, but I DO NOT think they listen to my concerns</b>	10	14	12	12	6	<b>54</b>	<b>10%</b>
<b>I do not have anyone to talk to about my medications</b>	2	8	5	6	2	<b>23</b>	<b>4%</b>
<b>TOTAL</b>	86	101	131	106	107	<b>531</b>	

Healthcare  
Services

Are you receiving the dental care you need?						
	13	14	15	16	17	TOTAL
Yes	157	192	212	205	211	977
No	20	21	30	30	24	125
TOTAL	177	213	242	235	235	1102
Percent Yes	89%	90%	88%	87%	90%	89%

Are you receiving the mental health care you need?							
	13	14	15	16	17	TOTAL	%
Yes	108	111	146	130	133	628	57%
No	10	13	17	14	23	77	7%
I do not need mental health services	56	77	75	77	72	357	32%
I am receiving mental health services I DO NOT WANT	3	12	4	14	7	40	4%
TOTAL	177	213	242	235	235	1102	

Are you receiving the substance abuse treatment services care you need?							
	13	14	15	16	17	TOTAL	%
Yes	27	27	44	42	44	184	17%
No	36	30	30	29	32	157	14%
I do not need substance abuse treatment services	112	151	165	156	156	740	67%
I am receiving substance abuse treatment services I DO NOT WANT	2	5	3	8	3	21	2%
TOTAL	177	213	242	235	235	1102	

In the last 12 months have you changed foster care placements?						
	13	14	15	16	17	TOTAL
<b>Yes</b>	65	73	95	100	96	<b>429</b>
<b>No</b>	112	140	147	135	139	<b>673</b>
<b>TOTAL</b>	177	213	242	235	235	<b>1102</b>
<b>Percent Yes</b>	37%	34%	39%	43%	41%	<b>39%</b>

429 youth surveyed reported: "YES", I have changed foster care placements in the last 12 months - and asked the following 3 questions...

When I had to move from one foster home to another, I knew why I was being moved.						
	13	14	15	16	17	TOTAL
<b>Yes</b>	53	53	88	79	89	<b>362</b>
<b>No</b>	12	20	7	21	7	<b>67</b>
<b>TOTAL</b>	65	73	95	100	96	<b>429</b>
<b>Percent Yes</b>	82%	73%	93%	79%	93%	<b>84%</b>

When I had to move from one foster home to another, I asked to be moved.						
	13	14	15	16	17	TOTAL
<b>Yes</b>	32	32	45	38	45	<b>192</b>
<b>No</b>	33	41	50	62	51	<b>237</b>
<b>TOTAL</b>	65	73	95	100	96	<b>429</b>
<b>Percent Yes</b>	49%	44%	47%	38%	47%	<b>45%</b>

When I moved, I was able to take my things with me.						
	13	14	15	16	17	TOTAL
<b>Yes</b>	61	65	84	81	87	<b>378</b>
<b>No</b>	4	8	11	19	9	<b>51</b>
<b>TOTAL</b>	65	73	95	100	96	<b>429</b>
<b>Percent Yes</b>	94%	89%	88%	81%	91%	<b>88%</b>

In my placement I am treated like a member of the family.						
	13	14	15	16	17	TOTAL
<b>Yes</b>	117	124	139	124	136	<b>640</b>
<b>No</b>	9	18	19	33	20	<b>99</b>
<b>I am in a group home and it feels like a family</b>	30	36	44	35	53	<b>198</b>
<b>I am in a group home and it does not feel like a family</b>	21	35	40	43	26	<b>165</b>
<b>TOTAL</b>	177	213	242	235	235	<b>1102</b>
<b>Percent Yes</b> [Includes responses of "I am in a group home and it feels like a family"]	83%	75%	76%	68%	80%	<b>76%</b>

My foster parent(s) took/have taken me to doctor's appointments.						
	13	14	15	16	17	TOTAL
<b>Yes</b>	99	107	102	101	107	<b>516</b>
<b>No</b>	11	11	14	17	16	<b>69</b>
<b>I do not live with a foster family</b>	67	95	126	117	112	<b>517</b>
<b>TOTAL</b>	177	213	242	235	235	<b>1102</b>
<b>Percent Yes</b> [Does not include responses of "I do not live with a foster family"]	90%	91%	88%	86%	87%	<b>88%</b>

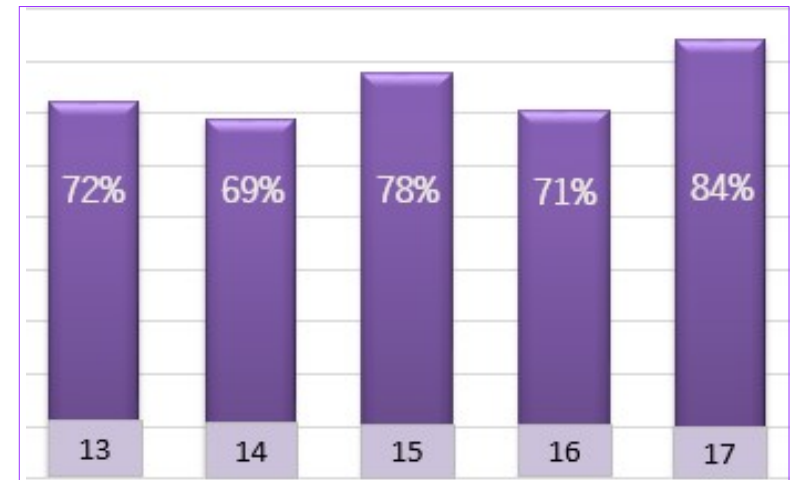
I feel comfortable talking about my family, sisters and/or brothers with my foster family.						
	13	14	15	16	17	TOTAL
<b>Yes</b>	79	90	92	77	83	<b>421</b>
<b>No</b>	24	18	16	24	15	<b>97</b>
<b>I do not live with a foster family</b>	74	105	134	134	137	<b>584</b>
<b>TOTAL</b>	177	213	242	235	235	<b>1102</b>
<b>Percent Yes</b> [Does not include responses of "I do not live with a foster family"]	77%	83%	85%	76%	85%	<b>81%</b>

My foster family helps arrange visits with my family and/or brothers/sisters as allowed by the courts.						
	13	14	15	16	17	TOTAL
<b>Yes</b>	80	83	76	71	69	<b>379</b>
<b>No</b>	24	26	31	28	30	<b>139</b>
<b>I do not live with a foster family</b>	73	104	135	136	136	<b>584</b>
<b>TOTAL</b>	177	213	242	235	235	<b>1102</b>
<b>Percent Yes</b> [Does not include responses of "I do not live with a foster family"]	77%	76%	71%	72%	70%	<b>73%</b>

Is there an adult in your life that you go to for advice and support? (DO NOT count your caseworker, foster parents, or staff at a group home)						
	13	14	15	16	17	TOTAL
Yes	128	147	188	166	198	827
No	49	66	54	69	37	275
<b>TOTAL</b>	177	213	242	235	235	1102
<b>Percent Yes</b>	72%	69%	78%	71%	84%	75%

I have a mentor.						
	13	14	15	16	17	TOTAL
Yes	58	69	82	74	97	380
No	78	100	115	99	102	494
I would like to have a mentor	41	44	45	62	36	228
<b>TOTAL</b>	177	213	242	235	235	1102
<b>Percent Yes</b>	33%	32%	34%	31%	41%	34%

75% of the youth ' surveyed report they have at least one adult (outside of the foster care system) they could go to for advice and support





## Food...Clothing...Religion'

In my placement I have enough food to eat.						
	13	14	15	16	17	TOTAL
Yes	171	199	229	211	220	1030
No	6	14	13	24	15	72
<b>TOTAL</b>	177	213	242	235	235	1102
<b>Percent Yes</b>	97%	93%	95%	90%	94%	93%

I have enough clothing in my size.						
	13	14	15	16	17	TOTAL
Yes	144	167	176	153	178	818
No	33	46	66	82	57	284
<b>TOTAL</b>	177	213	242	235	235	1102
<b>Percent Yes</b>	81%	78%	73%	65%	76%	74%

I am able to practice the religion of my choice.						
	13	14	15	16	17	TOTAL
Yes	127	166	155	154	160	762
No	16	14	14	21	13	78
I do not have a religion	34	33	73	60	62	262
<b>TOTAL</b>	177	213	242	235	235	1102
<b>Percent Yes</b> <small>[Does not include responses of "I do not have a religion"]</small>	89%	92%	92%	88%	92%	91%

I participate in the following: [Select All That Apply]							
	13	14	15	16	17	TOTAL	%
School Club	30	32	41	27	34	164	15%
Sports Team	38	49	61	34	49	231	21%
Community Club or Organization	23	22	20	17	24	106	10%
Faith Based Organization of my choice	49	39	35	28	40	191	17%
Go to school events, movies, shopping and other unsupervised activities with my friends	60	93	97	83	94	427	39%
Time with my friends	80	103	105	95	118	501	45%
Other	18	17	17	20	17	89	8%
None	43	59	73	92	69	336	30%

Extracurricular Activities, Friends  
& Teen Life

I want to participate in activities but...

40% I do not have Transportation

40% I do not have money

20% I am not allowed

I am allowed to spend the night with friends from my school or social group.				
	15	16	17	TOTAL
Yes	130	119	126	375
No	112	116	109	337
TOTAL	242	235	235	712
Percent Yes	54%	51%	54%	53%

I am allowed to Date.				
	15	16	17	TOTAL
Yes	198	190	203	591
No	44	45	32	121
TOTAL	242	235	235	712
Percent Yes	82%	81%	86%	83%

# 5.

## Foster Care

## TEEN LIFE

I am allowed to attend Prom.				
	15	16	17	TOTAL
Yes	213	199	198	610
No	29	36	37	102
<b>TOTAL</b>	242	235	235	712
<b>Percent Yes</b>	88%	85%	84%	86%

I am allowed to attend Homecoming.				
	15	16	17	TOTAL
Yes	217	202	201	620
No	25	33	34	92
<b>TOTAL</b>	242	235	235	712
<b>Percent Yes</b>	90%	86%	86%	87%

I am allowed to Date.				
	15	16	17	TOTAL
Yes	198	190	203	591
No	44	45	32	121
<b>TOTAL</b>	242	235	235	712
<b>Percent Yes</b>	82%	81%	86%	83%

In my placement I have privacy when I use the phone.						
	13	14	15	16	17	TOTAL
Yes	131	169	194	184	204	882
No	46	44	48	51	31	220
<b>TOTAL</b>	177	213	242	235	235	1102
<b>Percent Yes</b>	74%	79%	80%	78%	87%	80%

I have a cell phone.				
	15	16	17	TOTAL
Yes	164	152	176	492
No	78	83	59	220
<b>TOTAL</b>	242	235	235	712
<b>Percent Yes</b>	68%	65%	75%	69%

I have a computer.				
	15	16	17	TOTAL
Yes	105	106	107	318
No	137	129	128	394
<b>TOTAL</b>	242	235	235	712
<b>Percent Yes</b>	43%	45%	46%	45%

I have internet in my foster home/foster care placement.				
	15	16	17	TOTAL
Yes	180	166	180	526
No	62	69	55	186
<b>TOTAL</b>	242	235	235	712
<b>Percent Yes</b>	74%	71%	77%	74%

I am allowed to use the internet in my foster home/foster care placement.				
	15	16	17	TOTAL
Yes	162	150	171	483
No	18	16	9	43
<b>TOTAL</b>	180	166	180	526
<b>Percent Yes</b>	90%	90%	95%	92%

If yes: they have internet ↑

I receive my personal allowance each week.						
	13	14	15	16	17	TOTAL
<b>Yes</b>	102	113	131	110	121	<b>577</b>
<b>No</b>	75	100	111	125	114	<b>525</b>
<b>TOTAL</b>	177	213	242	235	235	<b>1102</b>
<b>Percent Yes</b>	58%	53%	54%	47%	51%	<b>52%</b>

I have my own savings account.						
	13	14	15	16	17	TOTAL
<b>Yes</b>	24	14	33	35	63	<b>169</b>
<b>No</b>	153	199	209	200	172	<b>933</b>
<b>TOTAL</b>	177	213	242	235	235	<b>1102</b>
<b>Percent Yes</b>	14%	7%	14%	15%	27%	<b>15%</b>

In my foster care placement, I practice life skills by setting my own alarm clock and getting ready for school/ work on time.				
	15	16	17	TOTAL
<b>Yes</b>	199	183	214	<b>596</b>
<b>No, I am not allowed to have my own alarm clock</b>	24	36	11	<b>71</b>
<b>I am allowed to have my own alarm clock and practice getting ready for school/work on time, but I DO NOT want to</b>	19	16	10	<b>45</b>
<b>TOTAL</b>	242	235	235	<b>712</b>
<b>Percent Yes</b> [Does not include responses of: I am allowed to have my own alarm clock and practice getting ready for school/work on time, but I DO NOT want to]	89%	84%	95%	<b>89%</b>

In my placement, I am learning to cook by helping cook our meals OR cooking my own meals.				
	15	16	17	TOTAL
<b>Yes, I am allowed to cook</b>	172	166	188	<b>526</b>
<b>No, I am not allowed to cook</b>	54	44	26	<b>124</b>
<b>I am allowed to cook, but I DO NOT want to</b>	16	25	21	<b>62</b>
<b>TOTAL</b>	242	235	235	<b>712</b>
<b>Percent Yes</b> [Does not include responses of: I am allowed to cook, but I do not want to]	76%	79%	88%	<b>81%</b>

I have a learners permit.				
	15	16	17	TOTAL
Yes	23	35	43	101
No	219	200	192	611
<b>TOTAL</b>	242	235	235	<b>712</b>
<b>Percent Yes</b>	10%	15%	18%	<b>14%</b>

Have you successfully completed a driver's education course?			
	16	17	TOTAL
Yes	38	72	135
No	186	157	552
I had the opportunity to take a driver's education course and I did not want to take a course	11	6	25
<b>TOTAL</b>	235	235	<b>712</b>
<b>Percent Yes</b> <small>[Does not include responses of: I had the opportunity to take a driver's education course and I did not want to take course]</small>	17%	31%	<b>20%</b>

I have a driver's license.			
	16	17	TOTAL
Yes	1	12	13
No	234	223	457
<b>TOTAL</b>	235	235	<b>470</b>
<b>Percent Yes</b>	0%	5%	<b>3%</b>

### Florida's "Keys to Independence" Program

The Florida Keys to Independence Act was signed into law in 2014. It is targeted at youth in licensed foster care between the ages of 15 to 21.

The Act created a 3-year pilot project. The Department of Children and Families selected Community Based Care of Central Florida (CBCCFL) to operate and manage the program for the entire state.

The pilot project will reimburse youth and caregivers for the costs associated with driver's education, driver's licenses and other costs related to getting a driver's license as well as motor vehicle insurance.

Learn about "Keys to Independence"  
[www.keystoindependence.org](http://www.keystoindependence.org)

I am learning job skills and independence by earning extra money by babysitting, mowing lawns, cleaning yards and other activities approved by my foster parent or group home staff.						
	13	14	15	16	17	TOTAL
Yes	90	112	102	110	109	523
No	87	101	140	125	126	579
<b>TOTAL</b>	177	213	242	235	235	1102
<b>Percent Yes</b>	51%	53%	42%	47%	46%	47%

I am getting job experience by volunteering.						
	13	14	15	16	17	TOTAL
Yes	47	69	87	81	100	384
No	130	144	155	154	135	718
<b>TOTAL</b>	177	213	242	235	235	1102
<b>Percent Yes</b>	27%	32%	36%	34%	43%	35%

I have been told about youth employment programs in my area, by my caseworker or staff.						
	13	14	15	16	17	TOTAL
Yes	71	102	91	91	123	478
No	106	111	151	144	112	624
<b>TOTAL</b>	177	213	242	235	235	1102
<b>Percent Yes</b>	40%	48%	38%	39%	52%	43%

What additional help do you need to get a job? Select all that apply] * % = # of responses / 712 respondents					
	15	16	17	TOTAL	%
Better reading and/or math skills	35	34	32	101	14%
Job Coaching	49	45	40	134	19%
Proper Clothing	35	38	30	103	14%
Learning how to complete a resume	58	62	48	168	24%
Interviewing skills	59	66	55	180	25%
Learning how to work out problems with coworkers and bosses	39	33	24	96	13%
Learning how to complete a job application	38	43	33	114	16%
Finding companies that are hiring	79	83	63	225	32%
None	110	81	97	288	40%

Employment

I am currently employed.				
	15	16	17	TOTAL
Yes	9	23	33	65
No	233	212	202	647
TOTAL	242	235	235	712
Percent Yes	4%	10%	14%	9%

Are you employed:				
	15	16	17	TOTAL
Part-time	8	17	28	53
Full-time	1	2	3	6
Seasonal	0	0	0	0
On-call	0	4	2	6
TOTAL	9	23	33	65

If yes: they are employed ↑

I have LEARNED specific employment skills based on my interest and abilities.	
	AGE 17
Yes	163
No	65
I am currently attending a training program specific to my interests and abilities	7
TOTAL	235
Percent Yes	69%

12% of youth ages '16-17 report "yes" ' they are employed'

# 6.

## Preparing for Adulthood: Age17

### TRANSITION

I have signed my Independent Living Transition Plan and it has been filed with the court.	
	AGE 17
Yes	88
No	55
I do not know	88
I had the opportunity to develop my Independent Living Transition Plan, but I DO NOT WANT to develop a transition plan	4
<b>TOTAL</b>	<b>235</b>
<b>Percent Yes</b>	<b>37%</b>

37% of the 17 year olds ' report they do not know if: ' "they have signed their ' Independent Living Transition Plan and it has been filed with ' the court"

Have you been informed of your option to remain in Extended Foster Care past the age of 18?	
	AGE 17
Yes	210
No	25
<b>TOTAL</b>	<b>235</b>
<b>Percent Yes</b>	<b>89%</b>

If yes: they have been informed of the option to remain in Extended Foster Care ↑

Do you plan to remain in Extended Foster Care when you turn 18?	
	AGE 17
Yes	134
No	76
<b>TOTAL</b>	<b>210</b>
<b>Percent Yes</b>	<b>64%</b>

If no: they do not plan to remain in Extended Foster ↑

Do you understand that you can decide to return to Foster Care up to your 21st Birthday?	
	AGE 17
Yes	74
No	2
<b>TOTAL</b>	<b>76</b>
<b>Percent Yes</b>	<b>97%</b>



Do you know what life skills you need to learn and practice to better prepare you for turning 18 and leaving foster care?	
	AGE 17
Yes	193
No	42
<b>TOTAL</b>	<b>235</b>
<b>Percent Yes</b>	<b>82%</b>

Did you develop a budget for your housing and other expenses when you leave foster care?	
	AGE 17
Yes	84
No	151
<b>TOTAL</b>	<b>235</b>
<b>Percent Yes</b>	<b>36%</b>

I KNOW what housing programs are available in the community where I will be living when I leave foster care.	
	AGE 17
Yes	144
No	52
I do not know where I will be living when I leave foster care	39
<b>TOTAL</b>	<b>235</b>
<b>Percent Yes</b>	<b>61%</b>

End of Report'

Questions about the survey, survey data or this report please contact:'

Info@Cby25i.org'