

Florida Sheriffs Performing Child Protective Investigations

ANNUAL PROGRAM PERFORMANCE EVALUATION REPORT

**Broward County Sheriff * Hillsborough County Sheriff * Manatee County Sheriff *
Pasco County Sheriff * Pinellas County Sheriff * Seminole County Sheriff ***

Fiscal Year 2015-2016

Conducted jointly by the Sheriff Offices of Broward, Hillsborough, Manatee, Pasco, Pinellas and Seminole Counties and the Florida Department of Children and Families



TABLE OF CONTENTS

EXECUTIVE SUMMARY	1
SECTION 1: SHERIFFS' INVOLVEMENT IN CHILD PROTECTIVE INVESTIGATIONS	3
Broward County Sheriff's Office	6
Hillsborough County Sheriff's Office	6
Manatee County Sheriff's Office	7
Pasco County Sheriff's Office	7
Pinellas County Sheriff's Office	8
Seminole County Sheriff's Office	8
SECTION II: PEER REVIEW PROCESS AND FINDINGS	9
Sampling Methodology and Size	9
Peer Review Teams	9
Broward County Sheriff's Office	12
Hillsborough County Sheriff's Office	12
Manatee County Sheriff's Office	12
Pasco County Sheriff's Office	13
Pinellas County Sheriff's Office	13
Seminole County Sheriff's Office	13
SECTION III: OUTCOME MEASURE ATTAINMENT	15
Commencement of Investigation within 24 Hours	16
Broward County Sheriff's Office	17
Hillsborough County Sheriff's Office	17
Manatee County Sheriff's Office	17
Pasco County Sheriff's Office	17
Pinellas County Sheriff's Office	17
Seminole County Sheriff's Office	18
Victims Seen Within 24 Hours	18
Broward County Sheriff's Office	18
Hillsborough County Sheriff's Office	19
Manatee County Sheriff's Office	19
Pasco County Sheriff's Office	20
Pinellas County Sheriff's Office	20
Seminole County Sheriff's Office	21
ADDITIONAL DEPARTMENT PROGRAM PERFORMANCE MEASURES	21
Closure of the Investigation by the 60th Day	21
Non-Recurrence of Maltreatment in Six Months	22
SECTION IV: COST EFFICIENCY	23
Cost per Report	23

[Page intentionally left blank]

EXECUTIVE SUMMARY

In the mid-1990s, a Sheriff Office pilot program with the Manatee Sheriff's Office to assume child protective investigations led to legislation in 1998 to expand the piloted model. The expansion in 1999 added sheriffs' offices in Pasco, Pinellas and Broward counties. Legislation transferred full responsibility for child protective investigations to these sheriffs in Fiscal Year (FY) 1998-1999. In 2000, the Seminole County Sheriff assumed the role, followed by Hillsborough County Sheriff in 2005. Citrus County Sheriff assumed the role in 2007; however, in 2012, responsibility was assumed back by the Department of Children and Families (Department). Currently, the six sheriffs' offices conducting child protective investigations (Broward, Hillsborough, Manatee, Pasco, Pinellas and Seminole) encompass metropolitan areas where more than a quarter of the state's child population resides.

This 17th Annual Sheriffs' Peer Review Report complies with section 39.3065(3)(d), Florida Statutes, concerning quality performance, outcome-measure attainment, and cost efficiency. A team of peer reviewers from both sheriff and Department staff complete casework audits on closed investigations, a component of the annual evaluation. The Department acknowledges Pasco County Sheriff Chris Nocco and his staff for leading efforts to draft this report.

The Annual Program Performance Report originated by legislation passed in 1998 [Chapter 98-180, Laws of Florida] and dictated original program performance oversight of sheriffs' offices performing child protective duties in the respective counties and came from a committee of seven persons appointed by the Governor. In 2000, the law changed regarding the annual review to have criteria mutually agreed upon by the sheriffs and the Department. Requirements amended in subsequent years placed the annual review under the mutual participation of both sheriffs' offices and the Department for the sheriffs' offices program evaluation.

During FY 2015-2016, there were a total of 213,736 child protective investigations conducted in the State of Florida. The six counties where sheriffs' offices handle investigations conducted 53,639 (25.10%) of the state's investigations and are an essential element in moving forward with shared values, principles and efforts the Department seeks for enhancing Florida's child protection system. The longstanding commitment of the sheriffs' offices involved in child protective investigations toward engaging families, protecting children, and working in partnership within their communities remains consistent and strong.

In 2016, the Sheriffs' Peer Review process included four days of onsite visits for each sheriff's location. Local operating procedures and management practices are available as a part of the teams' allowable review, but the local practices are not rated in the overall final review. Selected closed investigations were reviewed at each sheriff's site. The overall peer review score for each sheriff's office includes the results of the internal case file review and was calculated using the sheriffs' peer review tool in a web-based database with each file receiving equal weight in scoring. The results of the peer reviews are as follows:

- | | |
|---|-----|
| • Broward County Sheriff's Office: | 87% |
| • Hillsborough County Sheriff's Office: | 90% |
| • Manatee County Sheriff's Office: | 92% |
| • Pasco County Sheriff's Office: | 94% |
| • Pinellas County Sheriff's Office: | 96% |
| • Seminole County Sheriff's Office: | 96% |

Section 39.3065(3)(b), Florida Statutes, requires sheriffs' offices to operate in accordance with performance standards and outcome measures established by the Legislature. Child protection and child welfare outcomes are established in section 409.986(2), Florida Statutes. The three measures listed below are included in the sheriffs' grant agreements:

- 1) One hundred percent (100%) of investigations commenced within 24 hours.
The statewide average was 99.58% with the sheriffs' offices averaging 99.68%.
- 2) Eighty-five percent (85%) of victims seen within 24 hours of a report received.
The Statewide average was 86.4% with the sheriffs' offices averaging 87.95%.
- 3) One hundred percent (100%) of Child Safety Assessment (CSA) reports reviewed by supervisors are in accordance with the Department's timeframes. This performance measure has been replaced with a requirement to conduct a supervisory consultation within five days. The Department is developing a report for this measure, and data should be available for the FY 2016-2017 annual report.

Each sheriff has an individual Peer Review Report that is available to view and download at the Center for Child Welfare at <http://www.centerforchildwelfare.org/#>.

SECTION 1: SHERIFFS' INVOLVEMENT IN CHILD PROTECTIVE INVESTIGATIONS

Sheriffs' offices in Broward, Hillsborough, Manatee, Pasco, Pinellas, and Seminole Counties are authorized under section 39.065, Florida Statutes, to conduct child protective investigations in their respective counties. Upon receiving a report of known or suspected child abuse, abandonment, or neglect, or that a child is in need of supervision and care and has no parent, legal custodian, or responsible adult relative immediately known and available to provide supervision and care, the Florida Abuse Hotline notifies designated staff so that an investigation can be commenced. The Florida Abuse Hotline accepts five types of child intake reports:

1. In-home reports alleging maltreatment by a child's caregiver.
2. Institutional reports alleging maltreatment of a child by another person responsible outside of the child's caregiver (i.e., incident at school, childcare facility, etc.).
3. Child-on-child referrals alleging inappropriate sexual behavior or an alleged juvenile sexual offense.
4. Human Trafficking allegations.
5. Special condition referrals that include Parent Unavailable, Parent in Need of Assistance (PNA) and Foster Care Referrals.

The Florida Abuse Hotline is required to refer allegations of criminal conduct to the municipal or county law enforcement agency of the municipality or county in which the alleged conduct has occurred. These criminal allegations are not considered child protective investigations and, therefore, are not included in this report.

During FY 2015-2016, 27.54% of Florida's child population resided within a county where the sheriffs' office performs child protective investigations. These sheriffs' offices received 25.10% of initial and additional reports and special condition referrals. This totaled 53,639 reports and special condition referrals for the respective sheriffs' offices.

Percentage of Child Protective Reports by Sheriff, CBC and DCF FY 2015-2016

	Florida Child Population	% Florida's Child Population	Florida General Population	% Florida's General Population	Total 15/16: Initial, Additional, Special Condition Reports	Percent of Initial and Additional Reports and Special Condition Referrals
Broward	407,694	9.92%	1,751,406	9.33%	15,212	7.12%
Hillsborough	298,584	7.27%	1,203,245	6.41%	13,275	6.21%
Manatee	65,374	1.59%	319,293	1.70%	4,830	2.26%
Pasco	89,970	2.19%	440,628	2.35%	6,052	2.83%
Pinellas	171,861	4.18%	927,994	4.94%	9,736	4.56%
Seminole	98,034	2.39%	420,100	2.24%	4,534	2.12%
Sheriff Totals	1,131,517	27.54%	5,062,666	26.97%	53,639	25.10%
DCF Totals	2,977,062	72.46%	13,709,686	73.03%	158,574	74.19%
CBC Totals					1,521	0.71%
State Totals	4,108,579		18,772,352		213,736	

Sources: Florida Safe Families Network (FSFN) report: Child Investigations Received by Intake Sequence Type Statewide by District by Agency.

The following tables provide additional detail on the number of initial reports, additional reports and special condition referrals by month. Of the 213,736 child reports and special condition referrals, there were 174,919 initial intake reports, 21,876 additional intake reports and 16,941 special condition referrals. This was 4,416 more reports than in FY 2014- 2015, when there were 209,320 intake reports and special condition referrals. The two additional reports reflected under the community-based care lead agency (CBC) column are most likely a data entry error in the Florida Safe Families Network (FSFN) as CBCs are not authorized to conduct child protective investigations.

The six sheriffs' offices were responsible for 53,639 of these intake reports and special condition referrals, or
 Sheriffs' Annual Performance Report SFY 2015-2016

25.10% of the statewide total. During FY 2014-2015, the six sheriffs' offices were responsible for investigating 54,095 reports. This was a slight decrease of 456 reports during FY 2015-2016.

Initial, Additional and Special Condition Reports by Month and Agency

FY 2015-2016	Initial Reports				Additional Reports				Special Condition Intakes			
	DCF	CBC	Sheriff	Total	DCF	CBC	Sheriff	Total	DCF	CBC	Sheriff	Total
15-Jul	9687	0	3379	13066	1202	0	373	1575	909	134	268	1311
15-Aug	10202	0	3479	13681	1224	0	370	1594	856	141	252	1249
15-Sep	10708	0	3763	14471	1350	0	412	1762	941	139	248	1328
15-Oct	11272	0	3968	15240	1436	0	421	1857	1029	116	277	1422
15-Nov	10473	0	3610	14083	1378	0	417	1795	976	107	252	1335
15-Dec	10346	0	3671	14017	1449	0	429	1878	978	120	278	1376
16-Jan	10856	0	3709	14565	1332	0	430	1762	869	101	263	1233
16-Feb	10909	0	3768	14677	1372	0	407	1779	1011	107	284	1402
16-Mar	11479	0	3943	15422	1532	0	465	1997	1089	134	285	1508
16-Apr	11597	0	4055	15652	1466	0	443	1909	1160	119	341	1620
16-May	12232	0	4339	16571	1643	0	514	2157	1289	158	346	1793
16-Jun	10037	0	3437	13474	1383	2	426	1811	902	145	317	1364
Annual Totals	129798	0	45121	174919	16767	2	5107	21876	12009	1521	3411	16941

Total Initial, Additional and Special Condition Reports by Month

FY 2015-2016	Total of Initial, Additional and Special Condition Intakes			
	DCF	CBC	Sheriff	Total
15-Jul	11798	134	4020	15952
15-Aug	12282	141	4101	16524
15-Sep	12999	139	4423	17561
15-Oct	13737	116	4666	18519
15-Nov	12827	107	4279	17213
15-Dec	12773	120	4378	17271
16-Jan	13057	101	4402	17560
16-Feb	13292	107	4459	17858
16-Mar	14100	134	4693	18927
16-Apr	14223	119	4839	19181
16-May	15164	158	5199	20521
16-Jun	12322	147	4180	16649
Annual Totals	158574	1523	53639	213736

Source: DCF FSN Monthly Report: Child Investigations Received by Intake Sequence Type – Statewide by Agency

Each sheriff's office also handles various requests received from other states and/or other counties for child protective investigative assistance. Most requests include obtaining records, conducting a child-welfare check, verification of information, emergency home studies, etc. The work volume associated with such in-state requests (also known as "out-of-town inquiries"/OTIs) and inter-state requests varies from county to county but is estimated by the sheriffs' offices to account for an average of 10% of incoming casework assigned to child protective investigators. These requests for assistance are not officially tabulated or captured by the Department as a workload element when capturing active caseloads.

Child reporting rates vary significantly in Florida's 67 counties. Department monthly data on the reporting rates (initial and additional reports) that were received per 1,000 children population showed a statewide increase from FY 2014-2015 to FY 2015-2016 of .62 per 1,000 child population. The rate is trending upward when compared to the previous four fiscal years:

FY 2015-2016 annualized reporting rate of 47.09 per 1,000 child population
FY 2014-2015 annualized reporting rate of 46.47 per 1,000 child population
FY 2013-2014 annualized reporting rate of 45.34 per 1,000 child population
FY 2012-2013 annualized reporting rate of 44.04 per 1,000 child population

Reporting Rate Per 1,000 Children Statewide FY 2015/2016	
Rate of Initial & Additional Reports Received during month per 1,000 Child Population (Excludes Special Condition Referrals)	
Month	Rate
15-Jul	3.54
15-Aug	3.19
15-Sep	3.93
15-Oct	4.13
15-Nov	3.84
15-Dec	3.84
16-Jan	3.95
16-Feb	3.98
16-Mar	4.21
16-Apr	4.25
16-May	4.53
16-Jun	3.7
Total Annual Rate FY 2015- 2016	47.09
Average Monthly Rate	3.92

Reporting Rate Per 1,000 Children Sheriffs' Offices FY 2015-2016	
Rate of Initial & Additional Reports Received per 1000 Child Population	
Sheriff Office	12 Month Average
Broward	2.9
Hillsborough	3.47
Manatee	5.74
Pasco	5.28
Pinellas	4.47
Seminole	3.59
Average Monthly Rate	4.24

Source: DCF FSN Monthly Report: Child Investigations Received by Intake Sequence Type – Statewide by Agency

The U.S. Department of Health & Human Services, Administration for Children & Families, Children's Bureau collects related data from the majority of states on their reporting rates and publishes the information annually. The latest report¹ records data from 2013 and documents a national average of screened-in reports at 61%, with Florida's screened-in reports at 71% during FY 2014-2015. Florida's screen-in rates continue to be just below 80% for FY 2015-2016, but the number of special condition referrals screened in increased, from 1,245 in January 2016 to 1,816 in May 2016 – a 45.9% increase in five months.

The tables on the following pages provide data for each of the six sheriffs' offices for incoming reports by type and special condition referrals by type. The tables list the statewide percentage of reports and special condition referrals that the respective county received. The term "initial" refers to in-home and institutional investigations received on child/ren. The term "additional" references new allegations concerning a child/ren that are received during a timeframe where there is already an open and active initial investigation in progress. "Special condition" referrals are referrals that include: (1) child-on-child sexual abuse, (2) parent seeking assistance, (3) child is without custodial care or supervision as the caregiver/parent is reported unavailable.

¹ Child Maltreatment 2013 (Publication) Children's Bureau - <http://www.acf.hhs.gov/sites/default/files/cb/cm2013.pdf>
http://cwoutcomes.acf.hhs.gov/data/overview/clear_index

Broward County Sheriff's Office

Broward County Sheriff's Office received 15,212 reports and special condition referrals, which averaged 1,268 reports and special condition referrals monthly in FY 2015-2016. Special Condition referrals accounted for 6.8% of the intake workload. Broward County had a monthly average of 2.9 intake reports received per 1,000 children residing in the county. This equates to Broward County's reporting rate for FY 2015-2016 (12 months) at 34.77 reports for every 1,000 children residing in the county. Note: The rate of reports excludes special condition referrals.

Rate of Reports per 1,000 Children for Initial and Additional reports only

Month	Initial	Additional	Special Condition	Total Reports	% of State's Total	Child Report Rate Per 1,000*
15-Jul	994	119	74	1,187	7.74%	2.73
15-Aug	973	119	69	1161	7.27%	2.68
15-Sep	1090	123	81	1294	7.52%	2.98
15-Oct	1118	126	77	1321	7.33%	3.05
15-Nov	1028	119	77	1224	7.27%	2.81
15-Dec	977	125	89	1191	7.04%	2.7
16-Jan	1017	125	73	1215	7.21%	2.8
16-Feb	1036	135	91	1262	7.21%	2.87
16-Mar	1135	149	83	1367	7.52%	3.15
16-Apr	1138	131	120	1389	7.39%	3.11
16-May	1160	131	105	1396	7.00%	3.17
16-Jun	984	126	95	1205	7.57%	2.72
	12650	1528	1034	15212	7.34%	2.9
Total Annual Rate						34.77

Source: DCF FSFN Monthly Report: *Child Investigations Received by Intake Sequence Type – Statewide by Agency. Rate excludes Special Condition Referrals.*

Hillsborough County Sheriff's Office

Hillsborough County Sheriff's Office received 13,275 reports, which averaged 1,106 reports and special condition referrals monthly in FY 2015- 2016. Special condition referrals accounted for 6.45% of the intake workload. Hillsborough County had a monthly average of 3.47 intake reports received per 1,000 children residing in the county. This equates to Hillsborough County's reporting rate for FY 2015-2016 (twelve months) at 41.59 reports for every 1,000 children residing in the county. Note: The rate of reports excludes special condition referrals.

Rate of Reports per 1,000 Children for Initial and Additional reports only

Month	Initial	Additional	Special Condition	Total Reports	% of State's Total	Child Report Rate Per 1,000*
15-Jul	805	95	77	977	6.02%	3.01
15-Aug	879	83	70	1032	6.11%	3.22
15-Sep	898	89	63	1050	5.81%	3.31
15-Oct	931	98	75	1104	5.87%	3.45
15-Nov	912	108	43	1063	6.04%	3.42
15-Dec	949	93	76	1118	6.35%	3.49
16-Jan	891	108	72	1071	5.91%	3.35
16-Feb	1000	98	72	1170	5.91%	3.68
16-Mar	936	113	72	1121	5.76%	3.51
16-Apr	1008	95	67	1170	6.06%	3.69
16-May	1113	115	89	1317	6.19%	4.11
16-Jun	899	102	81	1082	6.35%	3.35
	11221	1197	857	13,275	6.03%	3.47
Total Annual Rate						41.59

Source: DCF FSFN Monthly Report: *Child Investigations Received by Intake Sequence Type – Statewide by Agency. Rate excludes Special Condition Referrals.*

Manatee County Sheriff's Office

Manatee County Sheriff's Office received 4,830 reports and special condition referrals, which averaged 403 reports and special condition referrals monthly in FY 2015-2016. Special condition referrals accounted for 6.85% of the intake workload. Manatee County had a monthly average of 5.74 intake reports received per 1,000 children residing in the county. This equates to Manatee County's reporting rate for FY 2015-2016 (12 months) at 68.82 reports for every 1,000 children residing in the county. Note: The rate of reports excludes special condition referrals.

Rate of Reports per 1,000 Children for Initial and Additional reports only

Month	Initial	Additional	Special Condition	Total Reports	% of State's Total	Child Report Rate Per 1,000*
15-Jul	326	31	16	373	2.32%	5.46
15-Aug	296	34	20	350	2.03%	5.05
15-Sep	355	35	25	415	2.28%	5.97
15-Oct	354	36	23	413	2.18%	5.97
15-Nov	334	26	29	389	2.22%	5.51
15-Dec	308	37	35	380	2.16%	5.28
16-Jan	336	48	20	404	2.26%	5.87
16-Feb	322	43	29	394	2.18%	5.58
16-Mar	383	52	34	469	2.44%	6.65
16-Apr	332	35	34	401	2.07%	5.61
16-May	402	42	38	482	2.26%	6.79
16-Jun	305	27	28	360	2.14%	5.08
	4053	446	331	4830	2.21%	5.74
Total Annual Rate						68.82

Source: DCF FSN Monthly Report: Child Investigations Received by Intake Sequence Type – Statewide by Agency. Rate excludes Special Condition Referrals.

Pasco County Sheriff's Office

Pasco County Sheriff's Office received 6,052 reports and special condition referrals, which averaged 504 reports and special condition referrals monthly in FY 2015-2016. Special condition referrals accounted for 5.73% of the intake workload. Pasco County had a monthly average of 5.28 intake reports received per 1,000 children residing in the county. This equates to Pasco County's reporting rate for FY 2015- 2016 (12 months) at 63.41 reports for every 1,000 children residing in the county. Note: The rate of reports excludes special condition referrals.

Rate of Reports per 1,000 Children for Initial and Additional reports only

Month	Initial	Additional	Special Condition	Total Reports	% of State's Total	Child Report Rate Per 1,000*
15-Jul	343	44	28	415	2.54%	4.3
15-Aug	397	48	25	470	2.80%	4.95
15-Sep	408	56	20	484	2.73%	5.16
15-Oct	478	64	23	565	3.07%	6.02
15-Nov	385	56	34	475	2.75%	4.9
15-Dec	419	57	24	500	2.84%	5.29
16-Jan	404	42	23	469	2.66%	4.96
16-Feb	383	53	26	462	2.56%	4.85
16-Mar	454	50	33	537	2.86%	5.6
16-Apr	474	68	30	572	2.94%	6.02
16-May	500	79	35	614	2.94%	6.44
16-Jun	374	69	46	489	2.91%	4.92
	5019	686	347	6052	2.80%	5.28
Total Annual Rate						63.41

Source: DCF FSN Monthly Report: Child Investigations Received by Intake Sequence Type – Statewide by Agency. Rate excludes Special Condition Referrals.

Pinellas County Sheriff's Office

Pinellas County Sheriff's Office received 9,736 reports and special condition referrals, which averaged 811 reports and special condition referrals monthly in FY 2015-2016. Special condition referrals accounted for 5.39% of the intake workload. Pinellas County had a monthly average of 4.47 intake reports received per 1,000 children residing in the county. This equates to Pinellas County's reporting rate for FY 2015-2016 (12 months) at 53.6 reports for every 1,000 children residing in the county. Note: The rate of reports excludes special condition referrals.

Rate of Reports per 1,000 Children for Initial and Additional reports only

Month	Initial	Additional	Special Condition	Total Reports	% of State's Total	Child Report Rate Per 1,000*
15-Jul	634	64	49	747	4.54%	4.06
15-Aug	628	59	43	730	4.30%	4
15-Sep	690	79	35	804	4.52%	4.47
15-Oct	738	71	49	858	4.61%	4.71
15-Nov	632	79	43	754	4.38%	4.14
15-Dec	698	81	36	815	4.58%	4.53
16-Jan	727	86	46	859	4.79%	4.73
16-Feb	675	57	45	777	4.23%	4.26
16-Mar	702	76	39	817	4.26%	4.53
16-Apr	739	90	52	881	4.54%	4.82
16-May	791	116	46	953	4.53%	5.28
16-Jun	617	82	42	741	4.46%	4.07
	8271	940	525	9736	4.48%	4.47
Total Annual Rate						53.6

Source: DCF FSN Monthly Report: Child Investigations Received by Intake Sequence Type – Statewide by Agency. Rate excludes Special Condition Referrals.

Seminole County Sheriff's Office

Seminole County Sheriff's Office received 4,534 reports and special condition referrals, which averaged 378 reports and special condition referrals monthly in FY 2015-2016. Special condition referrals accounted for 6.99% of the intake workload. Seminole County had a monthly average of intake reports received per 1,000 children residing in the county. This equates to Seminole County's reporting rate for FY 2015-2016 (12 months) at 43.02 reports for every 1,000 children residing in the county. Note: The rate of reports excludes special condition referrals.

Rate of Reports per 1,000 Children for Initial and Additional reports only

Month	Initial	Additional	Special Condition	Total Reports	% of State's Total	Child Report Rate Per 1,000*
15-Jul	277	20	24	321	1.96%	3.03
15-Aug	306	27	25	358	2.19%	3.4
15-Sep	322	30	24	376	2.12%	3.59
15-Oct	349	26	30	405	2.18%	3.83
15-Nov	319	29	26	374	2.10%	3.55
15-Dec	320	36	18	374	2.15%	3.63
16-Jan	334	21	29	384	2.05%	3.62
16-Feb	352	21	21	394	2.13%	3.8
16-Mar	333	25	24	382	1.93%	3.65
16-Apr	364	24	38	426	2.12%	3.96
16-May	373	31	33	437	2.12%	4.12
16-Jun	258	20	25	303	1.75%	2.84
	3907	310	317	4534	2.07%	3.59
Total Annual Rate						43.02

Source: DCF FSN Monthly Report: Child Investigations Received by Intake Sequence Type – Statewide by Agency. Rate excludes Special Condition Referrals

SECTION II: PEER REVIEW PROCESS AND FINDINGS

Section 39.3065 (3)(d), Florida Statutes, requires the sheriff's program performance evaluation to be conducted by a team of peer reviewers from the respective sheriffs' offices that performs child protective investigations and representatives from the Department. On April 14, 2016, discussions began between the Department and sheriffs' representatives to ensure the mutually agreed upon review tool for the sheriff's office peer review evaluated the change in practice, ongoing measurable goals and performance measures. The instrument was finalized and mutually approved in August 2016.

Peer reviews were conducted between September and December 2016. Peer review teams evaluated 390 randomly selected, closed judicial and non-judicial investigations. The review assessed compliance with statutory requirements, quality of investigations, safety decisions and safety actions implemented in the case through closure and transfer to a community-based care lead agency. The assessment included 10 practice areas, from initial response through case closure.

Sampling Methodology and Size

- The peer review identified closed investigations to be eligible for review. The investigations were opened and closed between January 1, 2016 and June 30, 2016. Additionally, the investigation had to result in the safety determination at closure of at least one unsafe child. Sixty-five closed cases were reviewed at each sheriff's office location.

Peer Review Teams

- DCF provided 12 quality assurance staff to participate on the peer review teams with at least two staff assigned to each review. Pursuant to section 39.3065(3)(d), Florida Statutes, the program performance evaluation is required to be conducted by a team of peer reviewers comprised of representatives from sheriffs' offices and the Department.
- The Department's Office of Child Welfare and the sheriffs' offices jointly developed the approach to the annual peer review. The teams at each location selected a lead person to oversee the orderly distribution of the work among the reviewers. The sheriffs' offices have always elected to allow the visiting team to complete all reviews, and the sheriff's office under review does not participate in the cases under review at its location.
- The statute references a "*team of peer reviewers.*" In this and all prior annual performance evaluations, sheriff and Department personnel who perform protective investigations and have respective quality assurance experience comprise the peer review team. An entrance conference is conducted at each location clarifying to the reviewers the specific unique operational systems incorporated within the particular county. The teams were onsite for four days completing the reviews.
- Peer reviewers were provided the original investigation files in all but one sheriff's office. For Seminole County Sheriff's Office, files were provided electronically. Each reviewer was provided FSN access to review case records electronically.

Cases review information was entered into an electronic format using a web-based system which captures the responses of the reviewer and identifies the reviewer's assessment for each question. The peer review tool underwent significant redesign for FY 2015-16 in order to thoroughly address the new practice model, which has been fully implemented within each of the six sheriffs' offices. Listed under the following titled categories are core components of questions within the Peer Review Tool:

Prior Abuse and Neglect Reports

Review of prior abuse and neglect reports for all household members and frequent visitors who provide supervision and/or care for the child/ren.

Criminal Records

Review of local criminal records for all household members and frequent visitors who provide supervision and/or care for the child/ren.

Review of Florida Criminal Information Center (FCIC) records for all household members and frequent visitors who provide supervision and/or care for the child/ren.

Review of National Criminal Information Center (NCIC) records for all household members and frequent visitors who provide supervision and/or care for the child/ren.

Investigative Activities

Reporter contacts

Child Protection Team (CPT) contact

Indian Child Welfare Act (ICWA)

Collateral contacts

Case closure

Interviews

Contact with household members

Interviews/observations of all household members

Documentation of maltreatments

Assessment of Present Danger

Completion of the Present Danger Assessment

Background history on participants

Supported documentation for identified threat or absence of present danger

Subsequent Present Danger Assessments

Safety Planning - Present Danger

Implementation of a Present Danger Safety Plan

Accuracy of the danger threats in the home

Development of the plan

Uploaded in FSFN Safety Managers

Review by a CPI Supervisor (CPIS)

Impending Danger - Family Functioning Assessment

Completion of the Family Functioning Assessment

Background history on participants

Documentation in the six domains

Child Safety Analysis Summary

Conditions for Return
Case Transfer

Safety Planning - Impending Danger

Implementation of an Impending Danger Safety Plan
Accuracy of the danger threats in the home
Development of the plan
Uploaded in FSFN
Safety Managers
Review by a CPIS
Five criteria for an in-home safety plan

Removal

Reasonable efforts
Prospective placements
Home Study
Psychotropic Medication

Consultations

Initial Supervisor Consultation
Case Closure
2nd Tier

The rating of file reviews used a yes, no or not applicable approach. Each question had three possible responses: "1" = Yes or Correct; "0" = No or Incorrect; "N/A" = Not Applicable and will not be scored. Overall performance was the weighted mean between each case reviewed. Each item was evaluated based on information contained within the file and rating guidance provided in the peer review tool.

The results were tabulated for the assessment on the above areas and immediate feedback was provided at the end of the evaluation via a prepared report for the sheriff's office under review. The web-based tool allows peer reviewers to complete an onsite stratification of the data at the conclusion of the review. In addition, it allows for drilling down the data to identify specific areas of concern by pinpointing a question and then identifying the unit, supervisor or child protective investigator assigned. This enables the program administrator to take action toward correcting any area of deficiency and identifying best practices within any unit, or by the supervisor or investigator. Each peer review included an exit interview, during which reviewers presented trends and information on cases they reviewed for management staff and supervisors. The finalized report fully documented all information discussed at the exit conferences. Each site had the ability to challenge the peer review team ratings prior to finalization of the report.

The categories for each case review, listed above, include 87 questions, eliciting a Yes/No/Not Applicable response. The review of closed investigations afforded a holistic view for each agency, allowing for further evaluation.

A detailed report for each sheriff is available to view and download at the Center for Child Welfare, <http://www.centerforchildwelfare.org/#>.

The date of the Peer Review, a listing of peer review team members and a summary of performance by sheriff is provided below.

Broward County Sheriff's Office

The Broward site visit was conducted on November 29 through December 2, 2016. The reviewers were:

Robert Wilson, Manatee Sheriff's Office
Kathleen Matthews, Hillsborough Sheriff's Office
Stephanie McKay, Pasco Sheriff's Office
Shawn Wilson, Pinellas Sheriff's Office
Jennifer Hollis, Seminole Sheriff's Office
Jay Saucer, Seminole Sheriff's Office
Leslie Jones, DCF Central Region
Joseph Lobianco, DCF Southeast Region

Final Closed Case Review Score for Broward Sheriff: 87%

Hillsborough County Sheriff's Office

The Hillsborough site visit was conducted September 12-15, 2016. The reviewers were:

Joseph Paduano, Broward Sheriff's Office
Jay Saucer, Seminole Sheriff's Office
Jennifer Hollis, Seminole Sheriff's Office
Stephanie McKay, Pasco Sheriff's Office
Rebecca Wilkinson-Shields, Pasco Sheriff's Office
Shawn Wilson, Pinellas Sheriff's Office
Robert Wilson, Manatee Sheriff's Office
Michael Janotti, Manatee Sheriff's Office
Christina Cuoco, DCF Suncoast Region Quality Assurance (QA)
Kyle Teague, DCF Suncoast Region Quality Assurance (QA)

Final Closed Case Review Score for Hillsborough Sheriff: 90%

Manatee County Sheriff's Office

The Manatee site visit was conducted October 10-13, 2016. The reviewers were:

Jay Saucer, Seminole Sheriff's Office
Shawn Wilson, Pinellas Sheriff's Office
Stephanie McKay, Pasco Sheriff's Office
Kathleen Matthews, Hillsborough Sheriff's Office
Joseph Paduano, Broward Sheriff's Office
Bill Raton, DCF Central Region
Atarri Hall, DCF Office of Child Welfare

Final Closed Case Review Score for Manatee Sheriff: 92%

Pasco County Sheriff's Office

The Pasco site visit was conducted September 26-29, 2016. The reviewers were:

Joseph Paduano, Broward Sheriff's Office
Jay Saucer, Seminole Sheriff's Office
Robert Wilson, Manatee Sheriff's Office
Kathleen Matthews, Hillsborough Sheriff's Office
Shawn Wilson, Pinellas Sheriff's Office
Atarri Hall, DCF Office of Child Welfare
Roxanne Council, DCF Suncoast Region Quality Assurance (QA)

Final Closed Case Review Score for Pasco Sheriff: 94%

Pinellas County Sheriff's Office

Pinellas site visit conducted November 7-10, 2016. The reviewers were:

Jay Saucer, Seminole Sheriff's Office
Stephanie McKay, Pasco Sheriff's Office
Robert Wilson, Manatee Sheriff's Office
Beth Hassen, Manatee Sheriff's Office
Kathleen Matthews, Hillsborough Sheriff's Office
Peggy Niermann, DCF Office of Child Welfare
Shawn Creney, DCF Suncoast Region Quality Assurance (QA)

Final Closed Case Review Score for Pinellas Sheriff: 96%

Seminole County Sheriff's Office

The Seminole site visit conducted October 24 through October 27, 2016. The reviewers were:

Joseph Paduano, Broward Sheriff's Office
Robert Wilson, Manatee Sheriff's Office
Stephanie McKay, Pasco Sheriff's Office
Kathleen Matthews, Hillsborough Sheriff's Office
Shawn Wilson, Pinellas Sheriff's Office
Kelly Faircloth, DCF Northwest Region
Holly Cummings, DCF Northwest Region

Final Closed Case Review Score for Seminole Sheriff: 96%

[Page intentionally left blank]

SECTION III: OUTCOME MEASURE ATTAINMENT

Section 39.3065(3)(b), Florida Statutes, requires sheriffs' offices to operate in accordance with performance standards and outcome measures established by the Legislature. Child protection and child welfare outcomes are established in section 409.986(2), Florida Statutes. The General Appropriations Act sets forth appropriations allocated through multi-year Grant Agreements with the six sheriffs' offices performing child protective investigations. The current Grant Agreements cite three performance measures for the sheriffs:

1. One hundred percent (100%) of investigations commenced within 24 hours,
2. Eighty-five percent (85%) of victims are seen within 24 hours of a report received, and
3. One hundred percent (100%) of Child Safety Assessment (CSA) reports reviewed by supervisors are in accordance with the Department's timeframes. The third performance measure has been replaced with a five-day supervisory consultation requirement for investigations.

Users enter the data for these performance measures and others into the statewide automated child welfare information system, the Florida Safe Families Network (FSFN). This system produces management reports used for determining statewide performance and outcomes. Noted below are three measures with their statutory or agency basis.

1) One hundred percent (100%) of investigations commenced within 24 hours

FSFN captures this performance measure on reports coded in-home and institutional. The special condition referrals and reports closed as "duplicate" or "no-jurisdiction" are not applicable to this measure. Florida Administrative Code (F.A.C.) references this performance measure as does section 39.201(5), Florida Statutes, which in part states:

"If it appears that the immediate safety or well-being of a child is endangered, that the family may flee or the child will be unavailable for purposes of conducting a child protective investigation, or that the facts otherwise so warrant, the Department shall commence an investigation immediately, regardless of the time of day or night. In all other child abuse, abandonment, or neglect cases, a child protective investigation shall be commenced within 24 hours after receipt of the report. "

2) Percent of child victims seen within 24 hours [Target goal 85%]

FSFN captures this performance measure on reports coded in-home and institutional. The special condition referrals and reports closed as "duplicate" or "no-jurisdiction" are not applicable to this measure. The performance measure is based on 65C-29.003(1)(b), F.A.C. which states:

"Commencement of the investigation is the first attempt to complete an on-site visit for the purpose of making a face-to-face contact with the child victim of the report within twenty-four hours of acceptance of the report..."

Section 39.302(1), Florida Statutes, references this performance measure. The subsection states in part:

"...the Department shall initiate a child protective investigation within the timeframe established under s. 39.201(5)..."

3) One hundred percent (100%) of reports with supervisory consultations completed within 5 days

This is modified from the measure in the grant agreements. The safety practice model now requires an initial supervisory consultation for all investigations within five calendar days from the Screening Decision Date/Time of the Intake. Report development is pending for this performance measure.

The FSFN management report, "Leader Board for Investigations," provides the data for all three measures. The report lists performance for each Department region and sheriff's office that operates a child protective investigation program. The report period represents FY 2015 - 2016. The algorithms for calculating the outcome measures are established by the Department. The algorithms are as follows:

- The first performance measure (Investigations commenced within 24 hours): The numerator is the number of reports commenced within 24 hours of receipt of the report. The denominator is the total number of reports closed in the report period.
- The second performance measure (Victims seen within 24 hours of report received): The numerator is the number of victims listed in recorded reports. The denominator is the total number of victims seen within 24 hours as recorded in the FSFN computer system.

Commencement of Investigation within 24 Hours

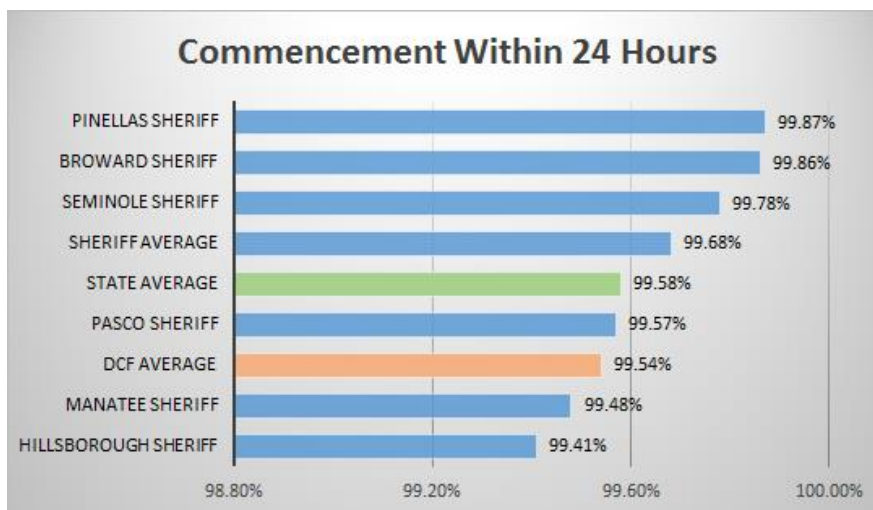
This performance outcome is significant, as Florida Statutes require the Department to be capable of receiving and investigating reports of known or suspected child abuse, abandonment, or neglect, 24 hours a day, seven days a week. In FY 2015–2016, the Department handled 213,736 initial and additional reports as well as special condition referrals. Of this number, 81.84% (174,919) were regular initial abuse reports; 7.93% (16,941) were special condition referrals, and 10.24% (21,876) were additional reports. All of these required an initial 24-hour or immediate response with the following exceptions:

- 1) "Parent Needs Assistance" referrals permitted by Department protocol may be handled outside of the customary 24-hour, face-to-face commencement response.
- 2) "Foster Care Referrals" (FCR) permitted by Department protocol may be commenced within 48 hours if initial circumstances warrant. FCRs are transferred to the local community-based care licensing agency for handling and accounted for 1,523 reports or 0.71% of the screened-in reports for the fiscal year.

Calls received at the Florida Abuse Hotline with supplemental information (with no additional allegations of harm on open investigations) were not referenced or added to the total number of reports received, since supplemental reports do not require additional child protection investigative actions. There were 25,142 supplemental reports added to open investigations in FY 2015-2016, averaging 2,095 supplemental reports accepted monthly.

FSFN performance reports exclude special condition referrals from being included in the data tracking on this measure. Therefore, this data would exclude child-on-child sexual abuse referrals, foster care referrals, parent unavailable referrals, and parent needs assistance referrals. The data provided in the statewide Leader Board also excludes those report commencements that are associated with an additional report. Finally, this report excludes investigations closed as being a duplicate or as no-jurisdiction. FSFN data includes only initial commencements.

This data is based on those initial reports that closed each month. If the data reflected a commencement within 24 hours of report acceptance, the commencement timeframe would be in compliance.



Source: DCF Leaderboard

Broward County Sheriff's Office

Overall, the Broward County Sheriff's Office for the FY 2015-2016 averaged 99.86% for commencements in 24 hours, which exceeded the statewide average for the fiscal year of 99.58%. The Broward sheriff's Office commencement rate increased in FY 2014-2015 from 99.72% in the prior fiscal year. The Broward Sheriff's Office had commencement outcomes of 100% for three of the 12 months.

Hillsborough County Sheriff's Office

The Hillsborough County Sheriff's Office in FY 2015-2016 averaged 99.41% on commencement outcomes while the statewide average was 99.58%. Hillsborough Sheriff's Office decreased from the prior FY 2014-2015 rate of 99.71%, as did the statewide average, which was 99.75% in FY 2014-2015.

Manatee County Sheriff's Office

In FY 2015-2016, the Manatee County Sheriff's Office averaged 99.48% on commencement outcomes while the statewide average was 99.58%. Both Manatee Sheriff's Office and the statewide average decreased from the prior FY 2014-2015, when Manatee sheriff was 99.67% and the statewide average was 99.75%. Manatee Sheriff's Office had commencement outcomes of 100% for three of the 12 months.

Pasco County Sheriff's Office

The Pasco County Sheriff's Office averaged 99.57% on commencement outcomes for FY 2015-2016 while the statewide average commencement outcome was 99.58%. Both Pasco Sheriff's Office and the statewide averages decreased from the prior FY 2014-2015 when Pasco Sheriff's Office was at 99.69% and the statewide average was 99.75%. Pasco Sheriff's Office had commencement outcomes of 100% for three of the 12 months.

Pinellas County Sheriff's Office

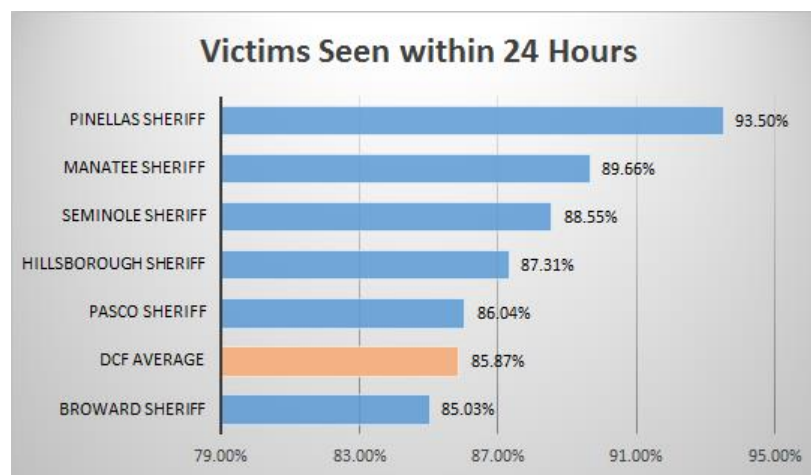
The Pinellas County Sheriff's Office averaged 99.87% on 24-hour commencement outcomes for FY 2015-2016, exceeding the statewide average of 99.58%. Both Pinellas Sheriff's Office and the statewide average decreased from the prior FY 2014-2015 when Pinellas Sheriff's Office was at 99.92% and the statewide average was 99.75%. For five months during FY 2015-2016, Pinellas Sheriff's Office achieved 100% compliance. Pinellas was the highest-ranking overall for commencement outcomes among all Circuits and Sheriffs' offices in FY 2014-2015 and FY 2015-2016.

Seminole County Sheriff's Office

The Seminole County Sheriff's Office averaged 99.78% on commencement outcomes for FY 2015-2016 while the statewide average was 99.58%. Seminole Sheriff's Office had a slight decrease from its prior year rate of 99.79%. The Seminole County Sheriff's Office was at 100% compliance for six of the 12 months in the fiscal year.

Victims Seen Within 24 Hours

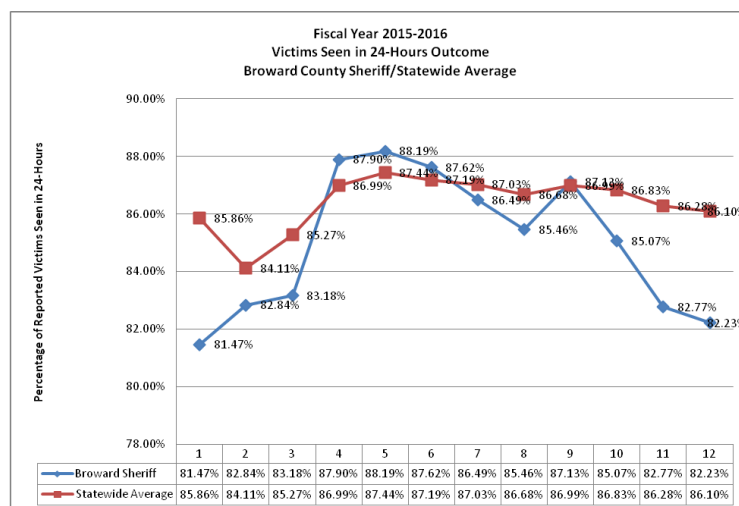
Sheriffs' Grant Agreements include the performance measure of 85% of child victims being seen within 24 hours of report receipt. Florida practice amended the policy to reflect the final Florida Abuse Hotline decision time to acceptance of the intake call versus the time of the phone call being received. FSFN captures this performance measure on reports coded in-home and institutional. The special condition referrals and reports closed as "duplicate" or "no-jurisdiction" are not applicable to this measure. The Statewide average was 86.40%, with the sheriffs' offices averaging 87.95% and DCF averaging 85.87%.



Source: FSFN closed investigation reports each month from July 2015 through June 2016 in a statewide report referred to as the Leader Board.

Broward County Sheriff's Office

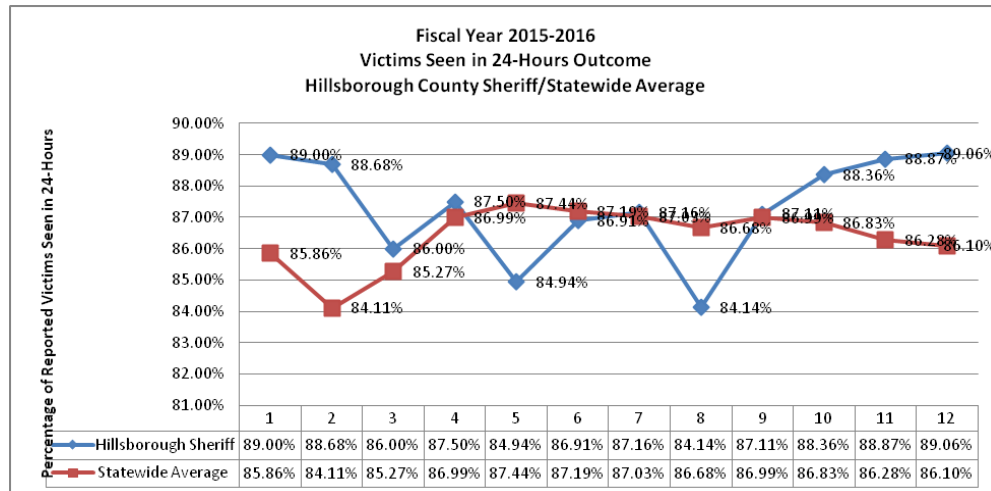
The Broward County Sheriff's Office averaged 85.03% in FY 2015-2016 for the performance outcome of victims being seen within 24 hours; this was an increase from the previous fiscal year's rate of 83.30%. The statewide average was 86.40%. The Broward Sheriff's Office exceeded the statewide average in four of the 12 months.



Source: The data was extracted from Data source: DCF FSFN "Child Investigation Leader Board Statewide by District by Agency" monthly reports for July 2015 through June 2016.

Hillsborough County Sheriff's Office

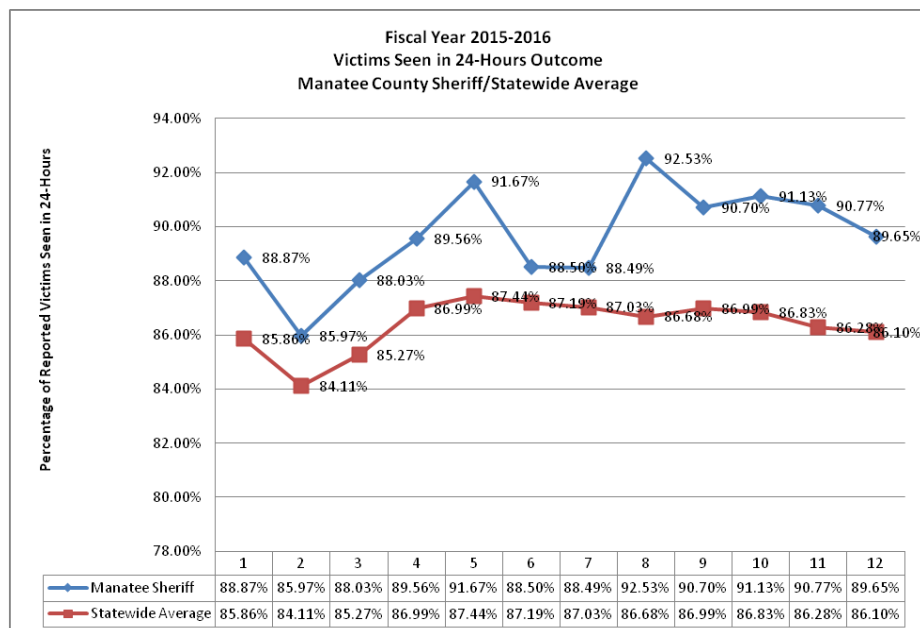
The Hillsborough County Sheriff averaged 87.31% for FY 2015-2016. The statewide average was 86.40% in FY 2015-2016. The Hillsborough Sheriff's Office exceeded the statewide average seven of the 12 months.



Source: The data was extracted from Data source: DCF FSN "Child Investigation Leader Board Statewide by District by Agency" monthly reports for July 2015 through June 2016.

Manatee County Sheriff's Office

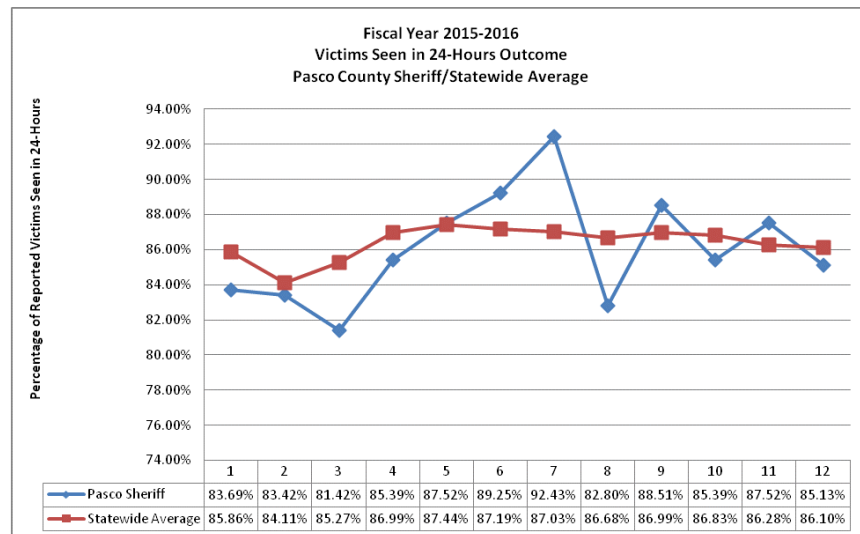
The Manatee County Sheriff's Office averaged 89.66% for FY 2015-2016 in the performance measure of seeing victim children within 24 hours. The Manatee Sheriff's Office exceeded the statewide average in each of the 12 months. The statewide average was 86.40%, a decrease from FY 2014-2015 when the rate was 87.99%.



Source: The data was extracted from Data source: DCF FSN "Child Investigation Leader Board Statewide by District by Agency" monthly reports for July 2015 through June 2016.

Pasco County Sheriff's Office

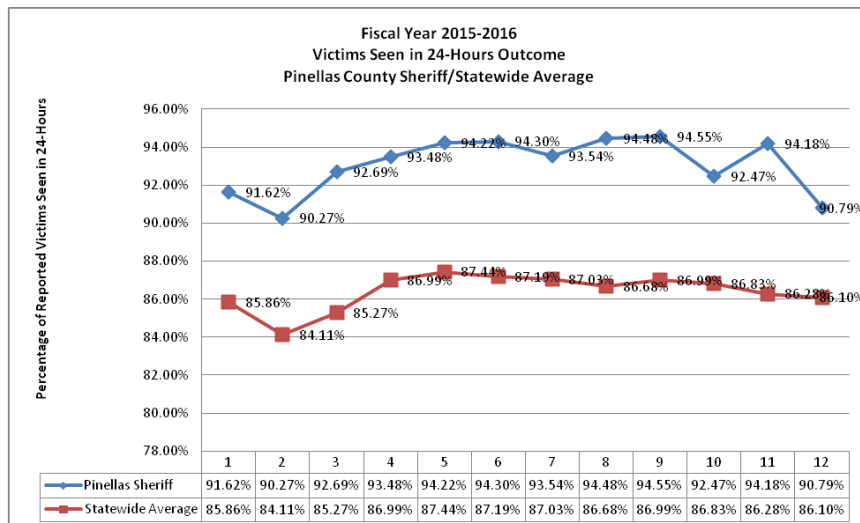
The Pasco County Sheriff's Office averaged 86.04% for FY 2015-2016 in the performance measure of victims being recorded seen within 24 hours. The Pasco Sheriff's Office decreased in this performance from the prior fiscal year outcome of 89.42%. The Pasco Sheriff's Office exceeded the statewide average in four of 12 months during FY 2015-2016. The statewide average decreased to 86.40% in FY 2015-2016 from 87.99% in FY 2014-2015.



Source: The data was extracted from Data source: DCF FSN "Child Investigation Leader Board Statewide by District by Agency" monthly reports for July 2015 through June 2016.

Pinellas County Sheriff's Office

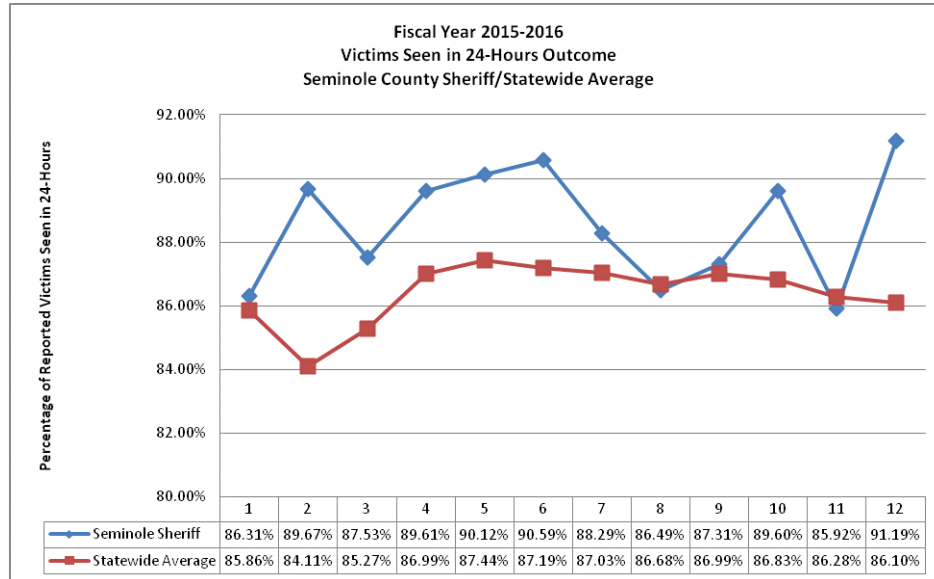
The Pinellas County Sheriff's Office averaged 93.05% for seeing victims within 24 hours of case received for FY 2015–2016, which is a slight decrease from the previous fiscal year's rate of 93.93%. The Pinellas Sheriff's Office exceeded the statewide average all 12 months. The statewide average of 86.40% was down from the prior fiscal year, when the rate was 87.99%.



Source: The data was extracted from Data source: DCF FSN "Child Investigation Leader Board Statewide by District by Agency" monthly reports for July 2015 through June 2016.

Seminole County Sheriff's Office

The Seminole County Sheriff's Office averaged 88.55% in FY 2015-2016 on the performance measure of seeing victims within 24 hours of intake received. The statewide average was 86.40%. The Seminole Sheriff's Office exceeded the statewide average 10 of 12 months, as well as increased from the prior fiscal year's rate of 87.79%.



Source: The data was extracted from Data source: DCF FSFN "Child Investigation Leader Board Statewide by District by Agency" monthly reports for July 2015 through June 2016.

ADDITIONAL DEPARTMENT PROGRAM PERFORMANCE MEASURES

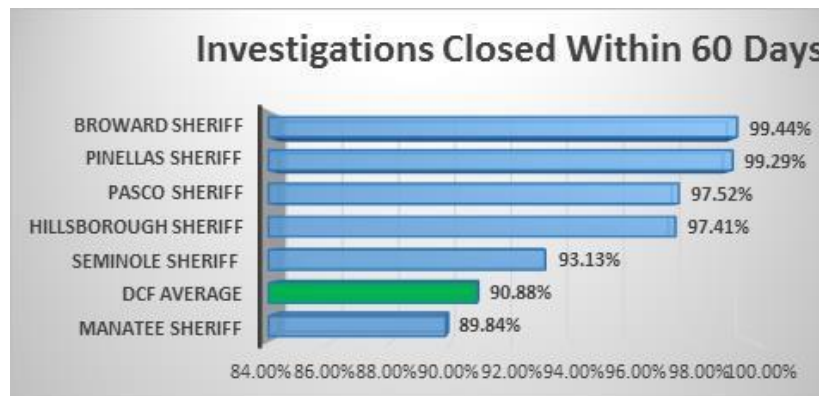
Other Leader Board Outcome Performance Measures, although not in the sheriff Grant Agreements, are important to overall casework practice statewide. Overall, in these additional Leader Board measures, the sheriffs' office averages exceeded the statewide averages.

Closure of the Investigation by the 60th Day

FSFN captures this performance measure on reports coded in-home and institutional. Special condition referrals, duplicate and no-jurisdiction reports are not applicable to this measure. The basis for this performance measure is section 39.301(16), Florida Statutes, which states:

"The Department shall complete its protective investigation within 60 days after receiving the initial report, unless: (a) There is also an active, concurrent criminal investigation that is continuing beyond the 60-day period and the closure of the protective investigation may compromise successful criminal prosecution of the child abuse or neglect case, in which case the closure date shall coincide with the closure date of the criminal investigation and any resulting legal action. (b) In child death cases, the final report of the medical examiner is necessary for the Department to close its investigation and the report has not been received within the 60-day period, in which case the report closure date shall be extended to accommodate the report. (c) A child who is necessary to an investigation has been declared missing by the Department, a law enforcement agency, or a court, in which case the 60-day period shall be extended until the child has been located or until sufficient information exists to close the investigation despite the unknown location of the child."

The Sheriffs' Offices averaged 97.20% for investigations being closed by the 60th day in FY 2015–2016. The DCF average was 90.88%. Overall, the statewide FY 2015-2016 average was 92.50%, down from the FY 2014-2015 rate of 94.70%.



Source: The data was extracted from Data source: DCF FSN "Child Investigation Leader Board Statewide by District by Agency" monthly reports for July 2015 through June 2016.

Non-Recurrence of Maltreatment in Six Months

Non-Recurrence of Maltreatment in six months is monitored against the federal Administration for Children and Families non-recurrence measure of 94.6%. The table below provides recurrence of maltreatment by sheriffs' offices and judicial circuit. The statewide average was 94.80% of verified victims with no recurrence of maltreatment within six months of case closure.

Non-Recurrence of Maltreatment in Six Months

Circuit/Sheriff	15-Jul	15-Aug	15-Sep	15-Oct	15-Nov	15-Dec	16-Jan	16-Feb	16-Mar
Circuit 01	93.81	94.92	92.89	92.46	93.75	92.31	97.59	92.61	93.84
Circuit 02	100	100	100	100	94.29	97.78	97.5	96.08	96.3
Circuit 03	94.03	100	93.75	97.22	97.3	100	98.04	91.49	96
Circuit 04	94.34	94.17	95.12	95.96	92.72	97.93	93.73	95.42	94.78
Circuit 05	96.49	94.64	93.81	94.21	94.66	97.19	92.09	88.97	95.67
C06/Pinellas Sheriff	92	92.21	91.38	94.39	92.89	93	95	93.98	90.77
C06/Pasco Sheriff	94.69	97.06	94.62	96.09	96.4	98.41	90.83	97.7	97.22
Circuit 07	99	94.07	94.08	99.45	91.98	98.31	94.94	90.64	90.91
Circuit 08	85.56	90.68	97.96	97.94	99.05	96.81	93.14	100	96.94
Circuit 09	95.86	96.98	96.84	93.22	93.7	96.82	96.61	97.97	94.18
Circuit 10	94.93	97.42	95.71	96.67	96.21	92.9	97.47	95.86	98.11
Circuit 11 Miami-Dade	95.28	93.69	96.85	95.08	97.14	95.31	94.4	97.4	97.42
Circuit 12	95.94	93.33	95.38	89.18	97.61	94.2	92.56	93.71	94.33
C12/ Manatee Sheriff	97.67	95.45	93.75	96.23	96.88	96.4	91.8	93.26	91.6
C13/Hillsborough Sheriff	95.11	95.88	97.03	95.32	97.13	95.77	92.11	95.81	97.01
Circuit 14	89.71	90.91	96.1	93.65	79.31	91.43	92.4	90	98.72
Circuit 15- Palm Beach	95.63	98.39	98.33	95.04	98.56	98.41	93.98	95.41	96.92
Circuit 16- Monroe	91.67	90.91	100	93.33	100	60	92.86	62.5	100
C17/Broward Sheriff	96.17	94.96	93.9	95.15	93.58	93.59	93.08	94.39	91.07
C18/Seminole Sheriff	94.22	93.78	89.13	93.26	91.43	92.9	93.37	91.85	93.72
Circuit 19	95.28	95.54	97.7	91.35	97.96	96.39	94.68	92.31	96.67
Circuit 20	95.57	95.94	94.71	93.45	98.1	93.12	94.05	96.74	96.97
Statewide Average	94.99	94.89	94.86	94.63	95.11	95.21	94.17	94.6	94.76

Source: Department FSN Child Protective Investigations Monthly Scorecard

SECTION IV: COST EFFICIENCY

This section provides an assessment of the cost efficiency based on the cost per report for initial and additional reports and special condition referrals for the sheriffs' offices and DCF regions. The table below provides expenditure and costs per report received data for FY 2014-2015 and FY 2015-2016. Dividing actual expenditures by the number of reports received determines the "Cost per Report." The overall number of reports received decreased by 0.073% as compared to FY 2014-2015 statewide, whereas, expenditures increased by 2.94% as compared to FY 2014-2015.

For sheriffs' offices, the cost range was from a low of \$907 per report received (Hillsborough) to a high of \$1,215 per report received (Pinellas), with an overall total cost per report of \$1,011. For the Department, the report breaks down costs and workload for each of the Department's regions that conduct child protective investigations. Costs per report received for regions ranged from a low of \$836 (Central Region) to a high of \$1,431 (Southeast Region), with an overall total cost per report of \$920. The difference between the total cost per report for sheriffs' offices and the Department was \$91 per report.

Cost per Report

AGENCY	Fiscal Year 2014-2015*			Fiscal Year 2015-2016**		
	Cost	Reports	Cost Per Report	Cost	Reports	Cost Per Report
Broward	\$15,052,477	15,944	\$944	\$14,995,821	15,212	\$986
Hillsborough	\$11,849,942	12,963	\$914	\$12,039,137	13,275	\$907
Manatee	\$4,717,888	4,698	\$1,004	\$4,719,787	4,830	\$977
Pasco	\$6,211,757	5,906	\$1,052	\$6,228,959	6,052	\$1,029
Pinellas	\$11,824,466	10,030	\$1,179	\$11,828,667	9,736	\$1,215
Seminole	\$4,346,426	4,565	\$952	\$4,435,448	4,534	\$978
All Sheriffs	\$54,002,956	54,106	\$998	\$54,247,819	53,639	\$1,011
Northwest	\$17,359,378	20,442	\$849	\$18,349,187	21,489	\$854
Northeast	\$32,122,247	34,990	\$918	\$32,718,739	36,088	\$907
Suncoast	\$13,252,214	15,096	\$878	\$13,753,091	15,907	\$865
Central	\$45,856,453	50,181	\$914	\$48,286,561	57,776	\$836
Southeast	\$15,661,314	17,950	\$872	\$17,060,123	11,923	\$1,431
Southern	\$16,119,074	15,542	\$1,037	\$15,667,526	15,391	\$1,018
Department	\$140,370,680	154,201	\$910	\$145,835,227	158,574	\$920
TOTAL	\$194,373,636	208,307	\$933	\$200,083,046	212,213	\$943

Reports Data Source: Child Protective Investigation Trend Report - Count of investigations Received (Initial and Additional and Special Condition Referrals)

Department Expenditure Source: IDS Query Schedule of Allotment Balances Trend

Notes:

1. Expenditure (Cost) data excludes training costs for sheriffs and the Department.
2. DCF expenditures include actual expenditures by region, plus actual indirect cost earnings (10.79%) in Fiscal Year 2014-2015. DCF expenditures include actual expenditures by region, plus indirect cost earnings (11.20%) in Fiscal Year 2015-2016. CBCs are excluded from cost calculations.

